

## UQCRFS1 Rabbit mAb

Catalog No: #59759

Package Size: #59759-1 50ul #59759-2 100ul

Orders: order@signalwayantibody.com

Support: tech@signalwayantibody.com

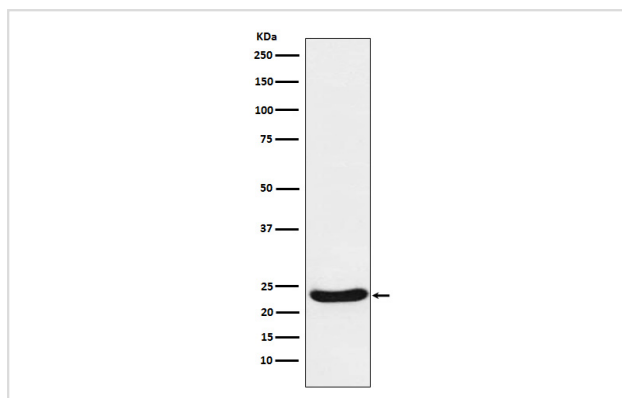
## Description

Product Name	UQCRFS1 Rabbit mAb
Host Species	Rabbit
Clonality	Monoclonal
Isotype	Rabbit IgG
Purification	Affinity-chromatography
Applications	WB IHC ICC/IF IP FC
Species Reactivity	Human Mouse Rat
Specificity	UQCRFS1 Antibody detects endogenous levels of total UQCRFS1
Immunogen Description	A synthesized peptide derived from human UQCRFS1
Other Names	petC; PGR1; RIP1; RIS1; RISP; UQCR5; UQCRFS1;
Accession No.	Uniprot:P47985
Uniprot	P47985
Formulation	Rabbit IgG in phosphate buffered saline , pH 7.4, 150mM NaCl, 0.02% sodium azide and 50% glycerol.
Storage	Store at +4°C short term. Store at -20°C long term. Avoid freeze / thaw cycle.

## Application Details

WB 1:500~1:2000 IHC 1:100~1:500 ICC/IF 1:50~1:200 IP 1:50 FC 1:100

## Images



Western blot analysis of UQCRFS1 expression in Raji cell lysate.

## Product Description

Component of the ubiquinol-cytochrome c reductase complex (complex III or cytochrome b-c1 complex), which is a respiratory chain that generates an electrochemical potential coupled to ATP synthesis.

## Background

---

Component of the ubiquinol-cytochrome c reductase complex (complex III or cytochrome b-c1 complex), which is a respiratory chain that generates an electrochemical potential coupled to ATP synthesis.

---

Note: This product is for in vitro research use only