

SF3B3 Rabbit mAb

Catalog No: #59767

Package Size: #59767-1 50ul #59767-2 100ul

Orders: order@signalwayantibody.com

Support: tech@signalwayantibody.com

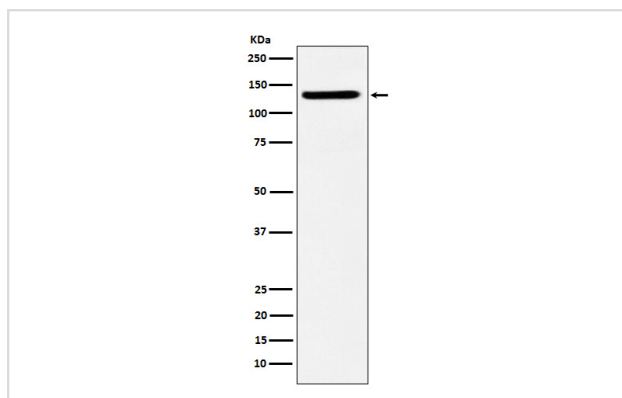
Description

Product Name	SF3B3 Rabbit mAb
Host Species	Rabbit
Clonality	Monoclonal
Isotype	Rabbit IgG
Purification	Affinity-chromatography
Applications	WB IHC ICC/IF FC
Species Reactivity	Human Mouse Rat
Specificity	SF3B3 Antibody detects endogenous levels of total SF3B3
Immunogen Description	A synthesized peptide derived from human SF3B3
Other Names	RSE1; SAP130; SF3b130; STAF130;
Accession No.	Uniprot:Q15393
Uniprot	Q15393
Formulation	Rabbit IgG in phosphate buffered saline , pH 7.4, 150mM NaCl, 0.02% sodium azide and 50% glycerol.
Storage	Store at +4°C short term. Store at -20°C long term. Avoid freeze / thaw cycle.

Application Details

WB 1:500~1:2000 IHC 1:100~1:500 ICC/IF 1:50~1:200 FC 1:100

Images



Western blot analysis of SF3B3 expression in HeLa cell lysate.

Product Description

Subunit of the splicing factor SF3B required for 'A' complex assembly formed by the stable binding of U2 snRNP to the branchpoint sequence (BPS) in pre-mRNA. Sequence independent binding of SF3A/SF3B complex upstream of the branch site is essential, it may anchor U2 snRNP to the pre-mRNA.

Background

Subunit of the splicing factor SF3B required for 'A' complex assembly formed by the stable binding of U2 snRNP to the branchpoint sequence (BPS) in pre-mRNA. Sequence independent binding of SF3A/SF3B complex upstream of the branch site is essential, it may anchor U2 snRNP to the pre-mRNA.

Note: This product is for in vitro research use only