

KMT1B / SUV39H2 Rabbit mAb

Catalog No: #59769

Package Size: #59769-1 50ul #59769-2 100ul

Orders: order@signalwayantibody.com

Support: tech@signalwayantibody.com

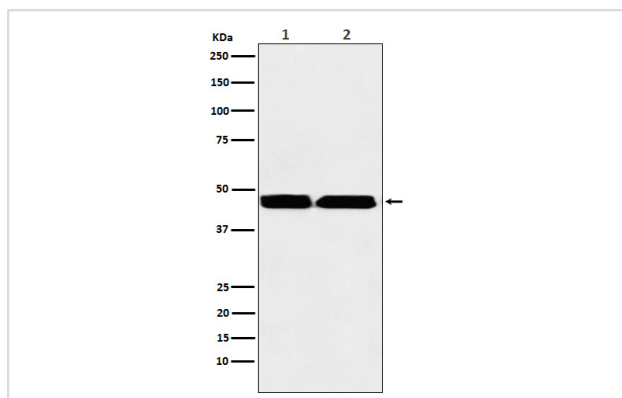
Description

Product Name	KMT1B / SUV39H2 Rabbit mAb
Host Species	Rabbit
Clonality	Monoclonal
Isotype	Rabbit IgG
Purification	Affinity-chromatography
Applications	WB IHC IP
Species Reactivity	Human Mouse Rat
Specificity	KMT1B / SUV39H2 Antibody detects endogenous levels of total KMT1B / SUV39H2
Immunogen Description	A synthesized peptide derived from human KMT1B / SUV39H2
Other Names	H3 K9 HMTase 2; KMT1B; Su(var)3 9 homolog 2; Suv39h2;
Accession No.	Uniprot:Q9H511
Uniprot	Q9H511
Formulation	Rabbit IgG in phosphate buffered saline , pH 7.4, 150mM NaCl, 0.02% sodium azide and 50% glycerol.
Storage	Store at +4°C short term. Store at -20°C long term. Avoid freeze / thaw cycle.

Application Details

WB 1:500~1:1000 IHC 1:50~1:200 IP 1:50

Images



Western blot analysis of KMT1B / SUV39H2 expression in (1) MOLT-4 cell lysate; (2) Human testis lysate.

Product Description

Histone methyltransferase that specifically trimethylates 'Lys-9' of histone H3 using monomethylated H3 'Lys-9' as substrate. H3 'Lys-9' trimethylation represents a specific tag for epigenetic transcriptional repression by recruiting HP1 (CBX1, CBX3 and/or CBX5) proteins to methylated histones.

Background

Histone methyltransferase that specifically trimethylates 'Lys-9' of histone H3 using monomethylated H3 'Lys-9' as substrate. H3 'Lys-9' trimethylation represents a specific tag for epigenetic transcriptional repression by recruiting HP1 (CBX1, CBX3 and/or CBX5) proteins to methylated histones.

Note: This product is for in vitro research use only