

Nicastrin Rabbit mAb

Catalog No: #59774

Package Size: #59774-1 50ul #59774-2 100ul

Orders: order@signalwayantibody.com

Support: tech@signalwayantibody.com

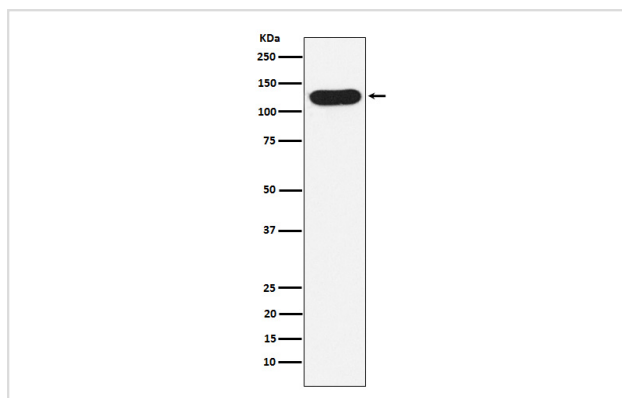
Description

| | |
|-----------------------|--|
| Product Name | Nicastrin Rabbit mAb |
| Host Species | Rabbit |
| Clonality | Monoclonal |
| Isotype | Rabbit IgG |
| Purification | Affinity-chromatography |
| Applications | WB ICC/IF |
| Species Reactivity | Human |
| Specificity | Nicastrin Antibody detects endogenous levels of total Nicastrin |
| Immunogen Description | A synthesized peptide derived from human Nicastrin |
| Other Names | APH2; Ncstn; NCT; Nicastrin; |
| Accession No. | Uniprot:Q92542 |
| Uniprot | Q92542 |
| Formulation | Rabbit IgG in phosphate buffered saline , pH 7.4, 150mM NaCl, 0.02% sodium azide and 50% glycerol. |
| Storage | Store at +4°C short term. Store at -20°C long term. Avoid freeze / thaw cycle. |

Application Details

WB 1:500~1:2000 ICC/IF 1:50~1:200

Images



Western blot analysis of Nicastrin expression in A431 cell lysate.

Product Description

Essential subunit of the gamma-secretase complex, an endoprotease complex that catalyzes the intramembrane cleavage of integral membrane proteins such as Notch receptors and APP (beta-amyloid precursor protein). It probably represents a stabilizing cofactor required for the assembly of the gamma-secretase complex.

Background

Essential subunit of the gamma-secretase complex, an endoprotease complex that catalyzes the intramembrane cleavage of integral membrane proteins such as Notch receptors and APP (beta-amyloid precursor protein). It probably represents a stabilizing cofactor required for the assembly of the gamma-secretase complex.

Note: This product is for in vitro research use only