

SOCS2 Rabbit mAb

Catalog No: #59775

Package Size: #59775-1 50ul #59775-2 100ul

Orders: order@signalwayantibody.com

Support: tech@signalwayantibody.com

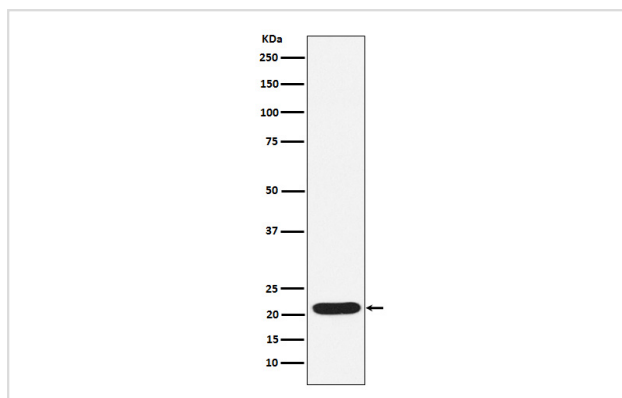
Description

Product Name	SOCS2 Rabbit mAb
Host Species	Rabbit
Clonality	Monoclonal
Isotype	Rabbit IgG
Purification	Affinity-chromatography
Applications	WB ICC/IF IP
Species Reactivity	Human
Specificity	SOCS2 Antibody detects endogenous levels of total SOCS2
Immunogen Description	A synthesized peptide derived from human SOCS2
Other Names	CIS2; Cish2; Socs2; SSI2; STATI2;
Accession No.	Uniprot:O14508
Uniprot	O14508
Formulation	Rabbit IgG in phosphate buffered saline , pH 7.4, 150mM NaCl, 0.02% sodium azide and 50% glycerol.
Storage	Store at +4°C short term. Store at -20°C long term. Avoid freeze / thaw cycle.

Application Details

WB 1:500~1:2000 ICC/IF 1:50~1:200 IP 1:50

Images



Western blot analysis of SOCS2 expression in K562 cell lysate.

Product Description

SOCS family proteins form part of a classical negative feedback system that regulates cytokine signal transduction. SOCS2 appears to be a negative regulator in the growth hormone/IGF1 signaling pathway.

Background

SOCS family proteins form part of a classical negative feedback system that regulates cytokine signal transduction. SOCS2 appears to be a negative regulator in the growth hormone/IGF1 signaling pathway.

Note: This product is for in vitro research use only