

# PKC gamma Rabbit mAb

Catalog No: #59778

Package Size: #59778-1 50ul #59778-2 100ul

Orders: [order@signalwayantibody.com](mailto:order@signalwayantibody.com)Support: [tech@signalwayantibody.com](mailto:tech@signalwayantibody.com)

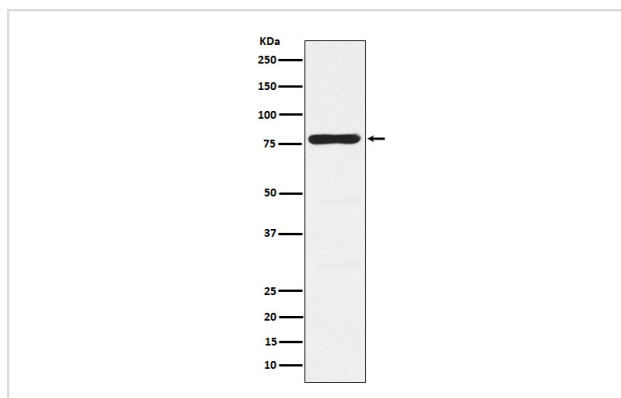
## Description

Product Name	PKC gamma Rabbit mAb
Host Species	Rabbit
Clonality	Monoclonal
Isotype	Rabbit IgG
Purification	Affinity-chromatography
Applications	WB ICC/IF
Species Reactivity	Human Mouse Rat
Specificity	PKC gamma Antibody detects endogenous levels of total PKC gamma
Immunogen Description	A synthesized peptide derived from human PKC gamma
Other Names	PKC-gamma; PKCC; PKCG; PRKCG; SCA14;
Accession No.	Uniprot:P05129
Uniprot	P05129
Formulation	Rabbit IgG in phosphate buffered saline , pH 7.4, 150mM NaCl, 0.02% sodium azide and 50% glycerol.
Storage	Store at +4°C short term. Store at -20°C long term. Avoid freeze / thaw cycle.

## Application Details

WB 1:500~1:2000 ICC/IF 1:50~1:200

## Images



Western blot analysis of PKC gamma expression in Human fetal brain lysate.

## Product Description

This is a calcium-activated, phospholipid-dependent, serine- and threonine-specific enzyme.

## Background

This is a calcium-activated, phospholipid-dependent, serine- and threonine-specific enzyme.

---

Note: This product is for in vitro research use only