

## Bcl10 Rabbit mAb

Catalog No: #59791

Package Size: #59791-1 50ul #59791-2 100ul

Orders: order@signalwayantibody.com

Support: tech@signalwayantibody.com

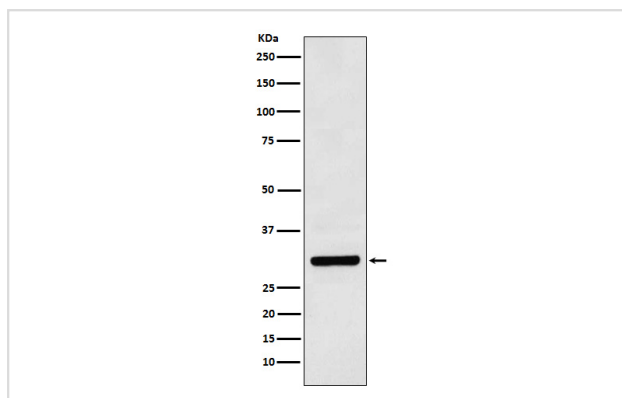
## Description

Product Name	Bcl10 Rabbit mAb
Host Species	Rabbit
Clonality	Monoclonal
Isotype	Rabbit IgG
Purification	Affinity-chromatography
Applications	WB ICC/IF IP
Species Reactivity	Human
Specificity	Bcl10 Antibody detects endogenous levels of total Bcl10
Immunogen Description	A synthesized peptide derived from human Bcl10
Other Names	BCL10; CARMEN; CIPER; CLAP; c-E10; mE10;
Accession No.	Uniprot:O95999
Uniprot	O95999
Formulation	Rabbit IgG in phosphate buffered saline , pH 7.4, 150mM NaCl, 0.02% sodium azide and 50% glycerol.
Storage	Store at +4°C short term. Store at -20°C long term. Avoid freeze / thaw cycle.

## Application Details

WB 1:500~1:2000 ICC/IF 1:50~1:200 IP 1:50

## Images



Western blot analysis of Bcl10 expression in Daudi cell lysate.

## Product Description

Promotes apoptosis, pro-caspase-9 maturation and activation of NF-kappa-B via NIK and IKK. May be an adapter protein between upstream TNFR1-TRADD-RIP complex and the downstream NIK-IKK-IKAP complex. Is a substrate for MALT1.

## Background

---

Promotes apoptosis, pro-caspase-9 maturation and activation of NF-kappa-B via NIK and IKK. May be an adapter protein between upstream TNFR1-TRADD-RIP complex and the downstream NIK-IKK-IKAP complex. Is a substrate for MALT1.

---

Note: This product is for in vitro research use only