

P2Y6 Rabbit mAb

Catalog No: #59804

Package Size: #59804-1 50ul #59804-2 100ul

Orders: order@signalwayantibody.com

Support: tech@signalwayantibody.com

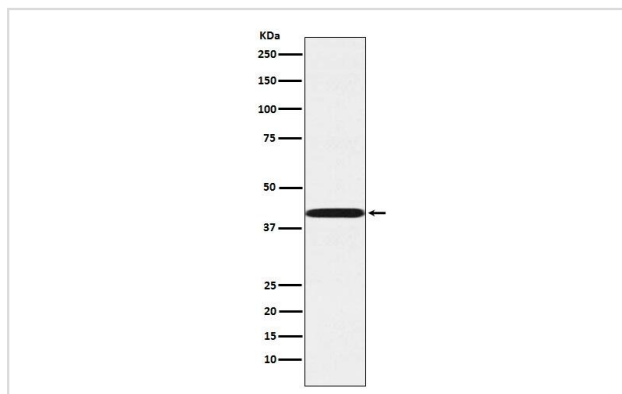
Description

Product Name	P2Y6 Rabbit mAb
Host Species	Rabbit
Clonality	Monoclonal
Clone No.	43E7
Isotype	Rabbit IgG
Purification	Affinity-chromatography
Applications	WB IHC ICC/IF IP
Species Reactivity	Human
Specificity	P2Y6 Antibody detects endogenous levels of total P2Y6
Immunogen Description	A synthesized peptide derived from human P2Y6
Target Name	P2RY6
Other Names	P2ry6; P2Y6; P2Y6 receptor; PP2891;
Accession No.	Uniprot:Q15077
Uniprot	Q15077
Formulation	Rabbit IgG in phosphate buffered saline , pH 7.4, 150mM NaCl, 0.02% sodium azide and 50% glycerol.
Storage	Store at +4°C short term. Store at -20°C long term. Avoid freeze / thaw cycle.

Application Details

WB 1:1000~1:5000 IHC 1:50~1:200 ICC/IF 1:50~1:200 IP 1:50

Images



All Lanes:P2Y6 Antibody at 1/ 1000 dilution.Lane1:A549 cell lysate.Proteins at 20ug per laneSecondary: Goat Anti-Rabbit IgG(HRP) at 1/20000 dilutionPredicted band size : 42kDaObserved band size: 42kDa

Product Description

Receptor for extracellular UDP > UTP > ATP. The activity of this receptor is mediated by G proteins which activate a phosphatidylinositol-calcium second messenger system.

Background

Receptor for extracellular UDP > UTP > ATP. The activity of this receptor is mediated by G proteins which activate a phosphatidylinositol-calcium second messenger system.

Note: This product is for in vitro research use only