

EGR2 Rabbit mAb

Catalog No: #59810

Package Size: #59810-1 50ul #59810-2 100ul

Orders: order@signalwayantibody.com

Support: tech@signalwayantibody.com

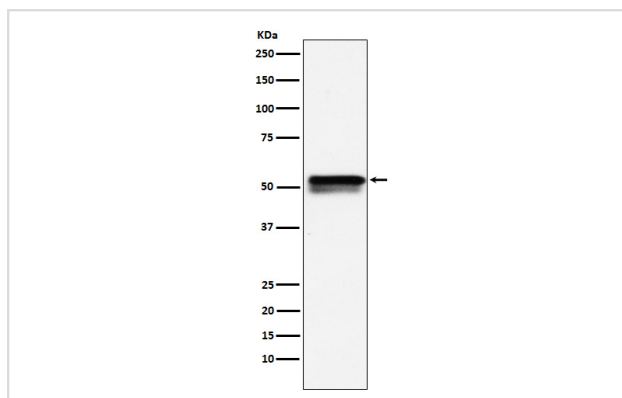
Description

Product Name	EGR2 Rabbit mAb
Host Species	Rabbit
Clonality	Monoclonal
Isotype	Rabbit IgG
Purification	Affinity-chromatography
Applications	WB
Species Reactivity	Human Mouse Rat
Specificity	EGR2 Antibody detects endogenous levels of total EGR2
Immunogen Description	A synthesized peptide derived from human EGR2
Other Names	AT591; CMT1D; CMT4E;; egr2; KROX20;
Accession No.	Uniprot:P11161
Uniprot	P11161
Formulation	Rabbit IgG in phosphate buffered saline , pH 7.4, 150mM NaCl, 0.02% sodium azide and 50% glycerol.
Storage	Store at +4°C short term. Store at -20°C long term. Avoid freeze / thaw cycle.

Application Details

WB 1:500~1:2000 FC 1:100

Images



Western blot analysis of EGR2 expression in LnCaP cell lysate.

Product Description

Sequence-specific DNA-binding transcription factor. Binds to two specific DNA sites located in the promoter region of HOXA4.

Background

Sequence-specific DNA-binding transcription factor. Binds to two specific DNA sites located in the promoter region of HOXA4.

Note: This product is for in vitro research use only