

Alcohol Dehydrogenase Rabbit mAb

Catalog No: #59817

Package Size: #59817-1 50ul #59817-2 100ul

Orders: order@signalwayantibody.com

Support: tech@signalwayantibody.com

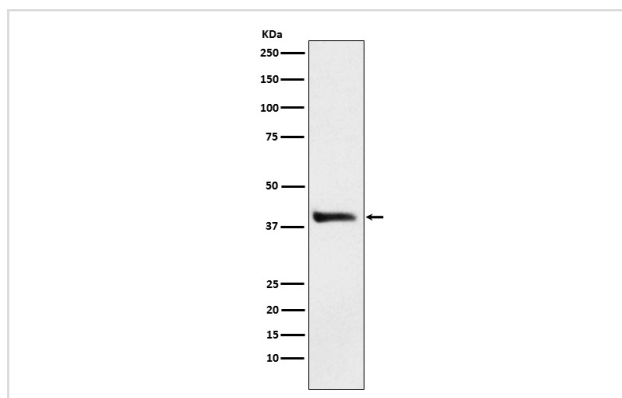
Description

Product Name	Alcohol Dehydrogenase Rabbit mAb
Host Species	Rabbit
Clonality	Monoclonal
Isotype	Rabbit IgG
Purification	Affinity-chromatography
Applications	WB IHC ICC/IF
Species Reactivity	Human Mouse Rat
Specificity	Alcohol Dehydrogenase Antibody detects endogenous levels of total Alcohol Dehydrogenase
Immunogen Description	A synthesized peptide derived from human Alcohol Dehydrogenase
Other Names	ADH; ADH1; ADH1A; Aldehyde reductase;
Accession No.	Uniprot:P07327
Uniprot	P07327
Formulation	Rabbit IgG in phosphate buffered saline , pH 7.4, 150mM NaCl, 0.02% sodium azide and 50% glycerol.
Storage	Store at +4°C short term. Store at -20°C long term. Avoid freeze / thaw cycle.

Application Details

WB 1:500~1:2000 IHC 1:50~1:200 ICC/IF 1:100~1:500

Images



Western blot analysis of Alcohol Dehydrogenase expression in HepG2 cell lysate.

Product Description

Belongs to the zinc-containing alcohol dehydrogenase family.

Background

Belongs to the zinc-containing alcohol dehydrogenase family.

Note: This product is for in vitro research use only