

GRIM19 Rabbit mAb

Catalog No: #59819

Package Size: #59819-1 50ul #59819-2 100ul

Orders: order@signalwayantibody.com

Support: tech@signalwayantibody.com

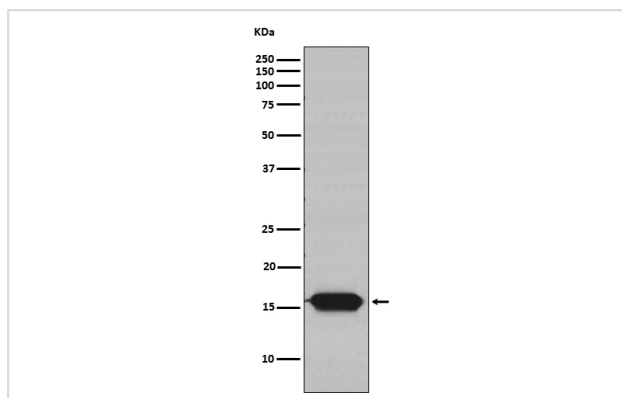
Description

Product Name	GRIM19 Rabbit mAb
Host Species	Rabbit
Clonality	Monoclonal
Isotype	Rabbit IgG
Purification	Affinity-chromatography
Applications	WB IHC ICC/IF
Species Reactivity	Human
Specificity	GRIM19 Antibody detects endogenous levels of total GRIM19
Immunogen Description	A synthesized peptide derived from human GRIM19
Other Names	B16.6; CDA016; CGI-39; GRIM19; GRIM-19;
Accession No.	Uniprot:Q9P0J0
Uniprot	Q9P0J0
Formulation	Rabbit IgG in phosphate buffered saline , pH 7.4, 150mM NaCl, 0.02% sodium azide and 50% glycerol.
Storage	Store at +4°C short term. Store at -20°C long term. Avoid freeze / thaw cycle.

Application Details

WB 1:500~1:2000 IHC 1:50~1:200 ICC/IF 1:50~1:200

Images



Western blot analysis of GRIM19 expression in Ramos cell lysate.

Product Description

Accessory subunit of the mitochondrial membrane respiratory chain NADH dehydrogenase (Complex I), that is believed not to be involved in catalysis. Complex I functions in the transfer of electrons from NADH to the respiratory chain.

Background

Accessory subunit of the mitochondrial membrane respiratory chain NADH dehydrogenase (Complex I), that is believed not to be involved in catalysis. Complex I functions in the transfer of electrons from NADH to the respiratory chain.

Note: This product is for in vitro research use only