

## Gli3 Rabbit mAb

Catalog No: #59822

Package Size: #59822-1 50ul #59822-2 100ul

Orders: order@signalwayantibody.com

Support: tech@signalwayantibody.com

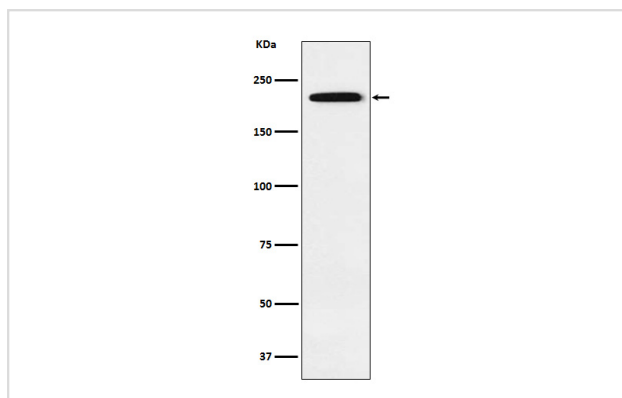
## Description

Product Name	Gli3 Rabbit mAb
Host Species	Rabbit
Clonality	Monoclonal
Isotype	Rabbit IgG
Purification	Affinity-chromatography
Applications	WB ICC/IF
Species Reactivity	Human
Specificity	Gli3 Antibody detects endogenous levels of total Gli3
Immunogen Description	A synthesized peptide derived from human Gli3
Other Names	ACLS; GCPS; GLI3; GLI3FL; PAPA; PAPA1; PAPB; PHS; PPDIV;
Accession No.	Uniprot:P10071
Uniprot	P10071
Formulation	Rabbit IgG in phosphate buffered saline , pH 7.4, 150mM NaCl, 0.02% sodium azide and 50% glycerol.
Storage	Store at +4°C short term. Store at -20°C long term. Avoid freeze / thaw cycle.

## Application Details

WB 1:500~1:2000 ICC/IF 1:50~1:200

## Images



Western blot analysis of Gli3 expression in 293 cell lysate.

## Product Description

Has a dual function as a transcriptional activator and a repressor of the sonic hedgehog (Shh) pathway, and plays a role in limb development. The full-length GLI3 form (GLI3FL) after phosphorylation and nuclear translocation, acts as an activator (GLI3A) while GLI3R, its C-terminally truncated form, acts as a repressor.

## Background

---

Has a dual function as a transcriptional activator and a repressor of the sonic hedgehog (Shh) pathway, and plays a role in limb development. The full-length GLI3 form (GLI3FL) after phosphorylation and nuclear translocation, acts as an activator (GLI3A) while GLI3R, its C-terminally truncated form, acts as a repressor.

---

Note: This product is for in vitro research use only