

Cdx1 Rabbit mAb

Catalog No: #59825

Package Size: #59825-1 50ul #59825-2 100ul

Orders: order@signalwayantibody.com

Support: tech@signalwayantibody.com

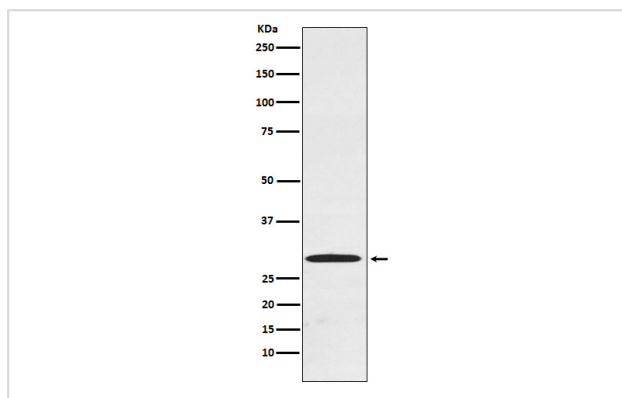
Description

| | |
|-----------------------|--|
| Product Name | Cdx1 Rabbit mAb |
| Host Species | Rabbit |
| Clonality | Monoclonal |
| Isotype | Rabbit IgG |
| Purification | Affinity-chromatography |
| Applications | WB ICC/IF |
| Species Reactivity | Human |
| Specificity | Cdx1 Antibody detects endogenous levels of total Cdx1 |
| Immunogen Description | A synthesized peptide derived from human Cdx1 |
| Other Names | CDX1; Homeobox protein CDX 1; |
| Accession No. | Uniprot:P47902 |
| Uniprot | P47902 |
| Formulation | Rabbit IgG in phosphate buffered saline , pH 7.4, 150mM NaCl, 0.02% sodium azide and 50% glycerol. |
| Storage | Store at +4°C short term. Store at -20°C long term. Avoid freeze / thaw cycle. |

Application Details

WB 1:500~1:1000 ICC/IF 1:50~1:200

Images



Western blot analysis of Cdx1 expression in Caco-2 cell lysate.

Product Description

Could play a role in the terminal differentiation of the intestine.

Background

Could play a role in the terminal differentiation of the intestine.

Note: This product is for in vitro research use only