

## Galectin 8 Rabbit mAb

Catalog No: #59826

Package Size: #59826-1 50ul #59826-2 100ul

Orders: [order@signalwayantibody.com](mailto:order@signalwayantibody.com)Support: [tech@signalwayantibody.com](mailto:tech@signalwayantibody.com)

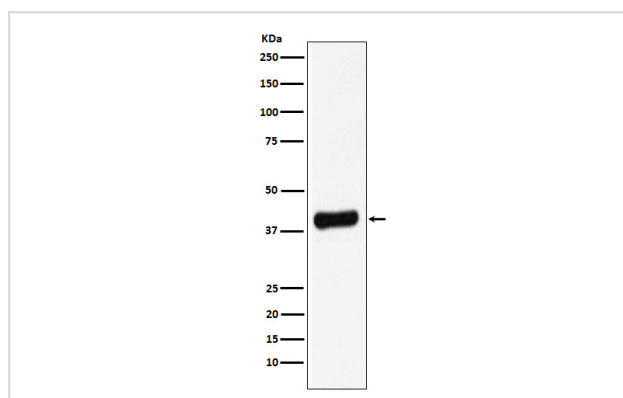
## Description

Product Name	Galectin 8 Rabbit mAb
Host Species	Rabbit
Clonality	Monoclonal
Isotype	Rabbit IgG
Purification	Affinity-chromatography
Applications	WB IHC ICC/IF IP FC
Species Reactivity	Human
Specificity	Galectin 8 Antibody detects endogenous levels of total Galectin 8
Immunogen Description	A synthesized peptide derived from human Galectin 8
Other Names	LGALS8; Galectin-8g; Galectin-8; Po66-CBP; PCTA-1; Gal-8; Galectin 8; PCTA1;
Accession No.	Uniprot:O00214
Uniprot	O00214
Formulation	Rabbit IgG in phosphate buffered saline , pH 7.4, 150mM NaCl, 0.02% sodium azide and 50% glycerol.
Storage	Store at +4°C short term. Store at -20°C long term. Avoid freeze / thaw cycle.

## Application Details

WB 1:500~1:2000 IHC 1:50~1:200 ICC/IF 1:50~1:200 IP 1:50 FC 1:50

## Images



Western blot analysis of Galectin 8 expression in LNCaP cell lysate.

## Product Description

Beta-galactoside-binding lectin that acts as a sensor of membrane damage caused by infection and restricts the proliferation of infecting pathogens by targeting them for autophagy.

## Background

---

Beta-galactoside-binding lectin that acts as a sensor of membrane damage caused by infection and restricts the proliferation of infecting pathogens by targeting them for autophagy.

---

Note: This product is for in vitro research use only