

IKBKE Rabbit mAb

Catalog No: #59827

Package Size: #59827-1 50ul #59827-2 100ul

Orders: order@signalwayantibody.com

Support: tech@signalwayantibody.com

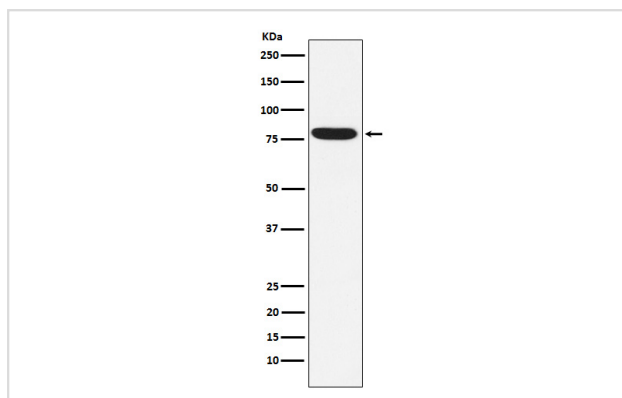
Description

Product Name	IKBKE Rabbit mAb
Host Species	Rabbit
Clonality	Monoclonal
Isotype	Rabbit IgG
Purification	Affinity-chromatography
Applications	WB IHC ICC/IF FC
Species Reactivity	Human
Specificity	IKKi/IKKe Antibody detects endogenous levels of total IKKi/IKKe
Immunogen Description	A synthesized peptide derived from human IKKi/IKKe
Other Names	IKBKE; IKK-E; IKK-i; IKKE; IKKI; IKKi/IKKe;
Accession No.	Uniprot:Q14164
Uniprot	Q14164
Formulation	Rabbit IgG in phosphate buffered saline , pH 7.4, 150mM NaCl, 0.02% sodium azide and 50% glycerol.
Storage	Store at +4°C short term. Store at -20°C long term. Avoid freeze / thaw cycle.

Application Details

WB 1:1000~1:5000 IHC 1:50~1:200 ICC/IF 1:50~1:200 FC 1:50

Images



Western blot analysis of IKKi/IKKe expression in Raji cell lysate.

Product Description

Phosphorylates inhibitors of NF-kappa-B thus leading to the dissociation of the inhibitor/NF-kappa-B complex and ultimately the degradation of the inhibitor. May play a special role in the immune response. Protects cells against DNA damage-induced cell death.

Background

Phosphorylates inhibitors of NF-kappa-B thus leading to the dissociation of the inhibitor/NF-kappa-B complex and ultimately the degradation of the inhibitor. May play a special role in the immune response. Protects cells against DNA damage-induced cell death.

Note: This product is for in vitro research use only