

## Tropomyosin 1 Rabbit mAb

Catalog No: #59830

Package Size: #59830-1 50ul #59830-2 100ul

Orders: [order@signalwayantibody.com](mailto:order@signalwayantibody.com)Support: [tech@signalwayantibody.com](mailto:tech@signalwayantibody.com)

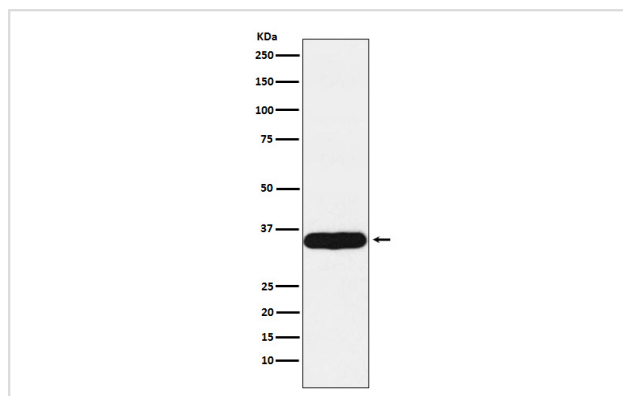
## Description

Product Name	Tropomyosin 1 Rabbit mAb
Host Species	Rabbit
Clonality	Monoclonal
Isotype	Rabbit IgG
Purification	Affinity-chromatography
Applications	WB IHC ICC/IF IP FC
Species Reactivity	Human Mouse Rat
Specificity	Tropomyosin 1 Antibody detects endogenous levels of total Tropomyosin 1
Immunogen Description	A synthesized peptide derived from human Tropomyosin 1
Other Names	CMH3; TMSA; CMD1Y; C15orf13; HTM-alpha;
Accession No.	Uniprot:P09493
Uniprot	P09493
Formulation	Rabbit IgG in phosphate buffered saline , pH 7.4, 150mM NaCl, 0.02% sodium azide and 50% glycerol.
Storage	Store at +4°C short term. Store at -20°C long term. Avoid freeze / thaw cycle.

## Application Details

WB 1:500~1:2000 IHC 1:50~1:200 ICC/IF 1:50~1:200 IP 1:50 FC 1:50

## Images



Western blot analysis of Tropomyosin 1 expression in Human heart lysate.

## Product Description

Binds to actin filaments in muscle and non-muscle cells. Plays a central role, in association with the troponin complex, in the calcium dependent regulation of vertebrate striated muscle contraction.

## Background

---

Binds to actin filaments in muscle and non-muscle cells. Plays a central role, in association with the troponin complex, in the calcium dependent regulation of vertebrate striated muscle contraction.

---

Note: This product is for in vitro research use only