

Carbonic Anhydrase 1 Rabbit mAb

Catalog No: #59833

Package Size: #59833-1 50ul #59833-2 100ul

Orders: order@signalwayantibody.com

Support: tech@signalwayantibody.com

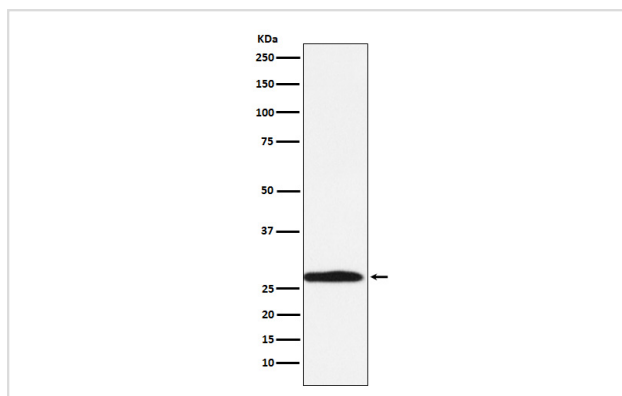
Description

Product Name	Carbonic Anhydrase 1 Rabbit mAb
Host Species	Rabbit
Clonality	Monoclonal
Isotype	Rabbit IgG
Purification	Affinity-chromatography
Applications	WB IHC ICC/IF
Species Reactivity	Human Mouse Rat Zebrafish
Specificity	Carbonic Anhydrase 1 Antibody detects endogenous levels of total Carbonic Anhydrase 1
Immunogen Description	A synthesized peptide derived from human Carbonic Anhydrase 1
Other Names	CA-I; Carbonic anhydrase B; CAB; Car1;
Accession No.	Uniprot:P00915
Uniprot	P00915
Formulation	Rabbit IgG in phosphate buffered saline , pH 7.4, 150mM NaCl, 0.02% sodium azide and 50% glycerol.
Storage	Store at +4°C short term. Store at -20°C long term. Avoid freeze / thaw cycle.

Application Details

WB 1:1000~1:5000 IHC 1:50~1:200 ICC/IF 1:100~1:500

Images



Western blot analysis of Carbonic Anhydrase 1 expression in K562 cell lysate.

Product Description

Reversible hydration of carbon dioxide. Can hydrates cyanamide to urea.

Background

Reversible hydration of carbon dioxide. Can hydrates cyanamide to urea.

Note: This product is for in vitro research use only