

## LY75 Rabbit mAb

Catalog No: #59834

Package Size: #59834-1 50ul #59834-2 100ul

Orders: order@signalwayantibody.com

Support: tech@signalwayantibody.com

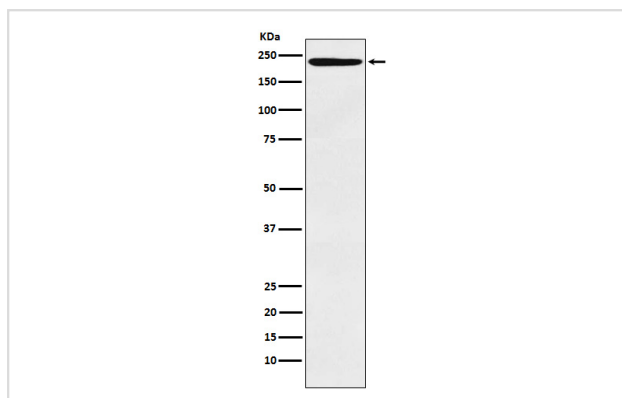
## Description

Product Name	LY75 Rabbit mAb
Host Species	Rabbit
Clonality	Monoclonal
Isotype	Rabbit IgG
Purification	Affinity-chromatography
Applications	WB IHC ICC/IF IP
Species Reactivity	Human Mouse
Specificity	LY75 Antibody detects endogenous levels of total LY75
Immunogen Description	A synthesized peptide derived from human LY75
Other Names	CD205; CLEC13B; DEC-205; gp200-MR6; Ly-75; LY75;
Accession No.	Uniprot:O60449
Uniprot	O60449
Formulation	Rabbit IgG in phosphate buffered saline , pH 7.4, 150mM NaCl, 0.02% sodium azide and 50% glycerol.
Storage	Store at +4°C short term. Store at -20°C long term. Avoid freeze / thaw cycle.

## Application Details

WB 1:500~1:2000 IHC 1:50~1:200 ICC/IF 1:50~1:200 IP 1:50

## Images



Western blot analysis of LY75 expression in Human tonsil lysate.

## Product Description

Acts as an endocytic receptor to direct captured antigens from the extracellular space to a specialized antigen-processing compartment (By similarity). Causes reduced proliferation of B-lymphocytes.

## Background

---

Acts as an endocytic receptor to direct captured antigens from the extracellular space to a specialized antigen-processing compartment (By similarity).  
Causes reduced proliferation of B-lymphocytes.

---

Note: This product is for in vitro research use only