

Bub3 Rabbit mAb

Catalog No: #59837

Package Size: #59837-1 50ul #59837-2 100ul

Orders: order@signalwayantibody.com

Support: tech@signalwayantibody.com

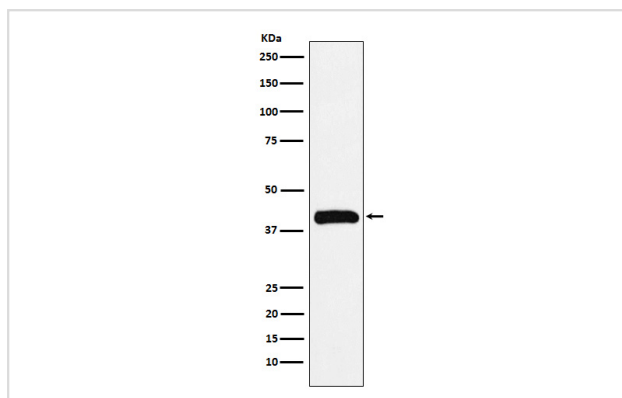
Description

| | |
|-----------------------|--|
| Product Name | Bub3 Rabbit mAb |
| Host Species | Rabbit |
| Clonality | Monoclonal |
| Isotype | Rabbit IgG |
| Purification | Affinity-chromatography |
| Applications | WB IHC ICC/IF IP FC |
| Species Reactivity | Human Mouse Rat |
| Specificity | Bub3 Antibody detects endogenous levels of total Bub3 |
| Immunogen Description | A synthesized peptide derived from human Bub3 |
| Other Names | BUB3; BUB 3L; |
| Accession No. | Uniprot:O43684 |
| Uniprot | O43684 |
| Formulation | Rabbit IgG in phosphate buffered saline , pH 7.4, 150mM NaCl, 0.02% sodium azide and 50% glycerol. |
| Storage | Store at +4°C short term. Store at -20°C long term. Avoid freeze / thaw cycle. |

Application Details

WB 1:1000~1:5000 IHC 1:50~1:200 ICC/IF 1:100~1:500 IP 1:50 FC 1:50

Images



Western blot analysis of Bub3 expression in Jurkat cell lysate.

Product Description

Has a dual function in spindle-assembly checkpoint signaling and in promoting the establishment of correct kinetochore-microtubule (K-MT) attachments. Promotes the formation of stable end-on bipolar attachments. Necessary for kinetochore localization of BUB1. Regulates chromosome segregation during oocyte meiosis.

Background

Has a dual function in spindle-assembly checkpoint signaling and in promoting the establishment of correct kinetochore-microtubule (K-MT) attachments. Promotes the formation of stable end-on bipolar attachments. Necessary for kinetochore localization of BUB1. Regulates chromosome segregation during oocyte meiosis.

Note: This product is for in vitro research use only