

MYH11 Rabbit mAb

Catalog No: #59838

Package Size: #59838-1 50ul #59838-2 100ul

Orders: order@signalwayantibody.com

Support: tech@signalwayantibody.com

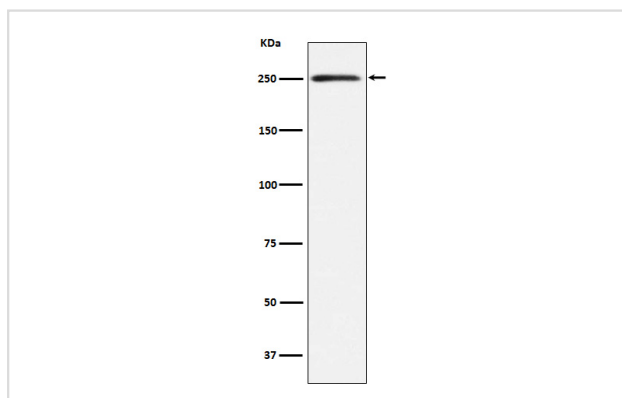
Description

Product Name	MYH11 Rabbit mAb
Host Species	Rabbit
Clonality	Monoclonal
Isotype	Rabbit IgG
Purification	Affinity-chromatography
Applications	WB IHC
Species Reactivity	Human Mouse
Specificity	Myosin, smooth muscle heavy chain 1 and 2 Antibody detects endogenous levels of total Myosin, smooth muscle heavy chain 1 and 2
Immunogen Description	A synthesized peptide derived from human Myosin, smooth muscle heavy chain 1 and 2
Other Names	AAT4; FAA4; MYH11; SM1; SM2; SMHC; SMMHC;
Accession No.	Uniprot:P35749
Uniprot	P35749
Formulation	Rabbit IgG in phosphate buffered saline , pH 7.4, 150mM NaCl, 0.02% sodium azide and 50% glycerol.
Storage	Store at +4°C short term. Store at -20°C long term. Avoid freeze / thaw cycle.

Application Details

WB 1:1000~1:5000 IHC 1:50~1:200

Images



Western blot analysis of Myosin, smooth muscle heavy chain 1 and 2 expression in Human bladder lysate.

Product Description

Muscle contraction.

Background

Muscle contraction.

Note: This product is for in vitro research use only