

BDKRB2 Rabbit mAb

Catalog No: #59843

Package Size: #59843-1 50ul #59843-2 100ul

Orders: order@signalwayantibody.com

Support: tech@signalwayantibody.com

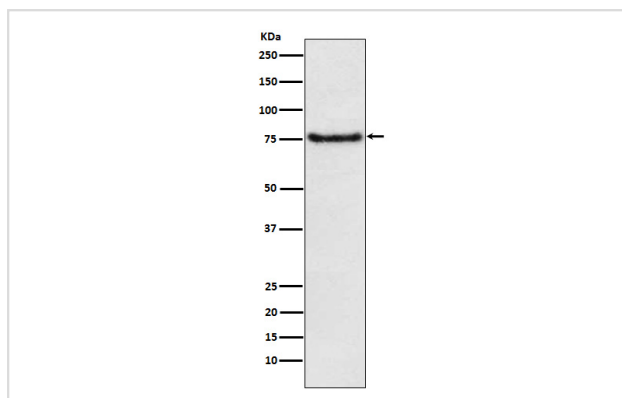
Description

Product Name	BDKRB2 Rabbit mAb
Host Species	Rabbit
Clonality	Monoclonal
Isotype	Rabbit IgG
Purification	Affinity-chromatography
Applications	WB IP
Species Reactivity	Human Mouse
Specificity	BDKRB2 Antibody detects endogenous levels of total BDKRB2
Immunogen Description	A synthesized peptide derived from human BDKRB2
Other Names	B2BKR; B2BRA; B2R; BDKRB2; BK2 receptor; BK2R; BKR2; BR B2; BRB2; Kinin B2;
Accession No.	Uniprot:P30411
Uniprot	P30411
Formulation	Rabbit IgG in phosphate buffered saline , pH 7.4, 150mM NaCl, 0.02% sodium azide and 50% glycerol.
Storage	Store at +4°C short term. Store at -20°C long term. Avoid freeze / thaw cycle.

Application Details

WB 1:500~1:2000 IP 1:50

Images



Western blot analysis of BDKRB2 expression in JAR cell lysate.

Product Description

Receptor for bradykinin. It is associated with G proteins that activate a phosphatidylinositol-calcium second messenger system.

Background

Receptor for bradykinin. It is associated with G proteins that activate a phosphatidylinositol-calcium second messenger system.

Note: This product is for in vitro research use only