

MST1 Rabbit mAb

Catalog No: #59848

Package Size: #59848-1 50ul #59848-2 100ul

Orders: order@signalwayantibody.com

Support: tech@signalwayantibody.com

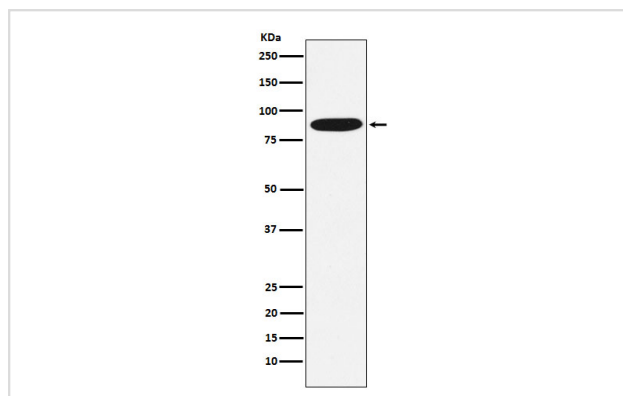
Description

Product Name	MST1 Rabbit mAb
Host Species	Rabbit
Clonality	Monoclonal
Isotype	Rabbit IgG
Purification	Affinity-chromatography
Applications	WB IHC FC
Species Reactivity	Human Mouse Rat
Specificity	MST1 Antibody detects endogenous levels of total MST1
Immunogen Description	A synthesized peptide derived from human MST1
Other Names	HGFL; MSP; MST1; NF15S2;
Accession No.	Uniprot:P26927
Uniprot	P26927
Formulation	Rabbit IgG in phosphate buffered saline , pH 7.4, 150mM NaCl, 0.02% sodium azide and 50% glycerol.
Storage	Store at +4°C short term. Store at -20°C long term. Avoid freeze / thaw cycle.

Application Details

WB 1:500~1:2000 IHC 1:50~1:200 FC 1:50

Images



Western blot analysis of MST1 expression in HepG2 cell lysate.

Product Description

Probably has no proteolytic activity, since crucial characteristic of serine proteases catalytic sites are not conserved.

Background

Probably has no proteolytic activity, since crucial characteristic of serine proteases catalytic sites are not conserved.

Note: This product is for in vitro research use only