

## CBFb Rabbit mAb

Catalog No: #59850

Package Size: #59850-1 50ul #59850-2 100ul

Orders: order@signalwayantibody.com

Support: tech@signalwayantibody.com

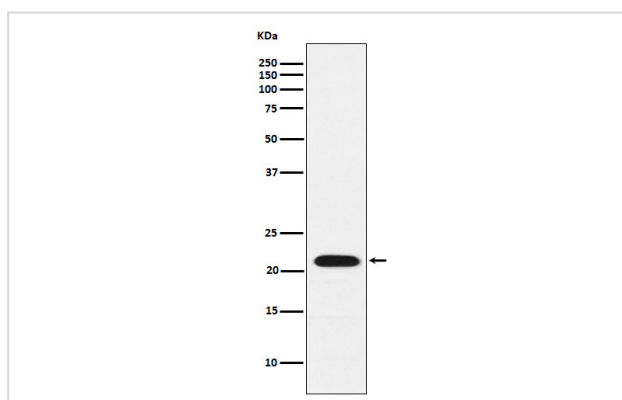
## Description

Product Name	CBFb Rabbit mAb
Host Species	Rabbit
Clonality	Monoclonal
Isotype	Rabbit IgG
Purification	Affinity-chromatography
Applications	WB IHC ICC/IF FC
Species Reactivity	Human Mouse Rat
Specificity	CBFb Antibody detects endogenous levels of total CBFb
Immunogen Description	A synthesized peptide derived from human CBFb
Other Names	CBFB; CBFbeta; PEA2; PEA2 beta; PEA2beta; PEBP2 beta; PEBP2B;
Accession No.	Uniprot:Q13951
Uniprot	Q13951
Calculated MW	22kDa
Formulation	Rabbit IgG in phosphate buffered saline , pH 7.4, 150mM NaCl, 0.02% sodium azide and 50% glycerol.
Storage	Store at +4°C short term. Store at -20°C long term. Avoid freeze / thaw cycle.

## Application Details

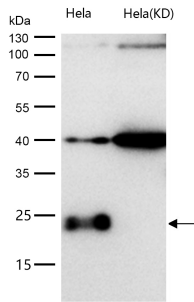
WB 1:500~1:1000 IHC 1:50~1:200 ICC/IF 1:50~1:200 FC 1:500

## Images



Western blot analysis of CBFb expression in K562 cell lysate.

All lanes use the Antibody at 1:500 dilution for 1 hour at room temperature.



## Product Description

CBF binds to the core site, 5'-PYGPYGGT-3', of a number of enhancers and promoters, including murine leukemia virus, polyomavirus enhancer, T-cell receptor enhancers, LCK, IL3 and GM-CSF promoters. CBFβ enhances DNA binding by RUNX1.

## Background

CBF binds to the core site, 5'-PYGPYGGT-3', of a number of enhancers and promoters, including murine leukemia virus, polyomavirus enhancer, T-cell receptor enhancers, LCK, IL3 and GM-CSF promoters. CBFβ enhances DNA binding by RUNX1.

Note: This product is for in vitro research use only