

## SUN2 Rabbit mAb

Catalog No: #59853

Package Size: #59853-1 50ul #59853-2 100ul

Orders: order@signalwayantibody.com

Support: tech@signalwayantibody.com

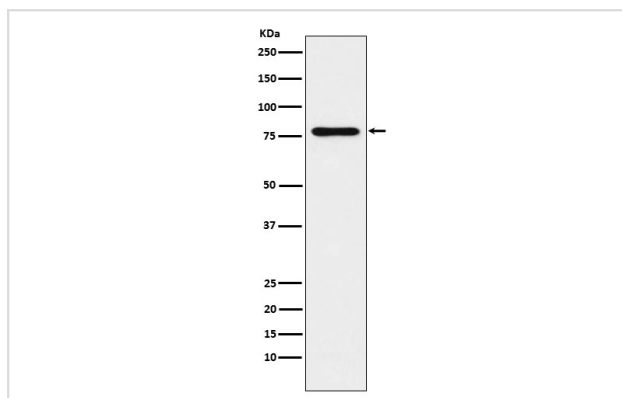
## Description

|                       |  |
|-----------------------|--|
| Product Name          | SUN2 Rabbit mAb  |
| Host Species          | Rabbit   |
| Clonality             | Monoclonal   |
| Isotype               | Rabbit IgG   |
| Purification          | Affinity-chromatography  |
| Applications          | WB IHC ICC/IF FC   |
| Species Reactivity    | Human Mouse Rat  |
| Specificity           | SUN2 Antibody detects endogenous levels of total SUN2  |
| Immunogen Description | A synthesized peptide derived from human SUN2  |
| Other Names           | FRIGG; UNC84B;   |
| Accession No.         | Uniprot:Q9UH99   |
| Uniprot               | Q9UH99   |
| Formulation           | Rabbit IgG in phosphate buffered saline , pH 7.4, 150mM NaCl, 0.02% sodium azide and 50% glycerol. |
| Storage               | Store at +4°C short term. Store at -20°C long term. Avoid freeze / thaw cycle.                     |

## Application Details

WB 1:500~1:2000 IHC 1:100~1:500 ICC/IF 1:50~1:200 FC 1:50

## Images



Western blot analysis of SUN2 expression in Jurkat cell lysate.

## Product Description

SUN proteins form part of the LINC complex - a protein bridge that spans the nuclear envelope linking the nucleoskeleton to the actin cytoskeleton. They are located on the inner nuclear membrane side of the complex.

## Background

---

SUN proteins form part of the LINC complex - a protein bridge that spans the nuclear envelope linking the nucleoskeleton to the actin cytoskeleton. They are located on the inner nuclear membrane side of the complex.

---

Note: This product is for in vitro research use only