

## Nectin 2 Rabbit mAb

Catalog No: #59858

Package Size: #59858-1 50ul #59858-2 100ul

Orders: order@signalwayantibody.com

Support: tech@signalwayantibody.com

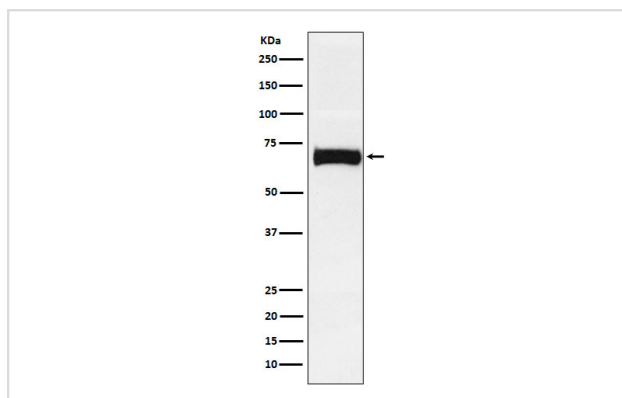
## Description

Product Name	Nectin 2 Rabbit mAb
Host Species	Rabbit
Clonality	Monoclonal
Isotype	Rabbit IgG
Purification	Affinity-chromatography
Applications	WB ICC/IF IP FC
Species Reactivity	Human Mouse Rat
Specificity	Nectin 2 Antibody detects endogenous levels of total Nectin 2
Immunogen Description	A synthesized peptide derived from human Nectin 2
Other Names	HVEB; PRR2; CD112; PVRR2;
Accession No.	Uniprot:Q92692
Uniprot	Q92692
Formulation	Rabbit IgG in phosphate buffered saline , pH 7.4, 150mM NaCl, 0.02% sodium azide and 50% glycerol.
Storage	Store at +4°C short term. Store at -20°C long term. Avoid freeze / thaw cycle.

## Application Details

WB 1:500~1:2000 ICC/IF 1:50~1:200 IP 1:100 FC 1:50

## Images



Western blot analysis of Nectin 2 expression in SW480 cell lysate.

## Product Description

Probable cell adhesion protein.

## Background

Probable cell adhesion protein.

---

Note: This product is for in vitro research use only