

Desmoglein 2 Rabbit mAb

Catalog No: #59859

Package Size: #59859-1 50ul #59859-2 100ul

Orders: order@signalwayantibody.com

Support: tech@signalwayantibody.com

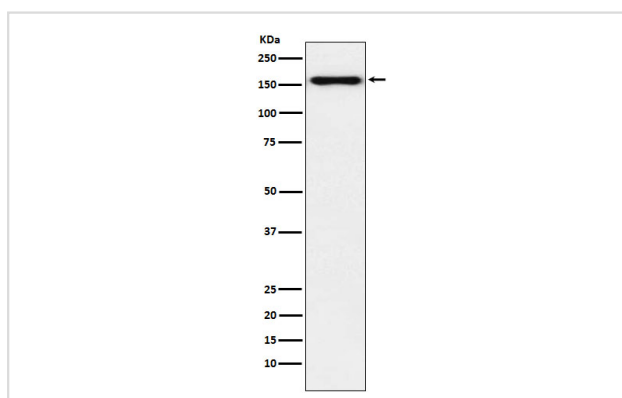
Description

Product Name	Desmoglein 2 Rabbit mAb
Host Species	Rabbit
Clonality	Monoclonal
Isotype	Rabbit IgG
Purification	Affinity-chromatography
Applications	WB IHC ICC/IF FC
Species Reactivity	Human Mouse Rat
Specificity	Desmoglein 2 Antibody detects endogenous levels of total Desmoglein 2
Immunogen Description	A synthesized peptide derived from human Desmoglein 2
Other Names	desmoglein-2; DSG2; HDGC; ARVD10; CDHF5; CMD1BB;
Accession No.	Uniprot:Q14126
Uniprot	Q14126
Calculated MW	160kDa
Formulation	Rabbit IgG in phosphate buffered saline , pH 7.4, 150mM NaCl, 0.02% sodium azide and 50% glycerol.
Storage	Store at +4°C short term. Store at -20°C long term. Avoid freeze / thaw cycle.

Application Details

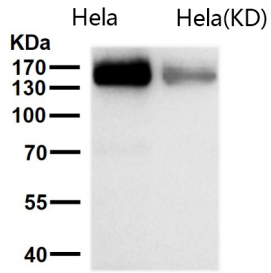
WB 1:1000~1:5000 IHC 1:50~1:200 ICC/IF 1:50~1:200 FC 1:100

Images



Western blot analysis of Desmoglein 2 expression in HeLa cell lysate.

All lanes use the Antibody at 1:1K dilution for 1 hour at room temperature.



Product Description

Component of intercellular desmosome junctions. Involved in the interaction of plaque proteins and intermediate filaments mediating cell-cell adhesion.

Background

Component of intercellular desmosome junctions. Involved in the interaction of plaque proteins and intermediate filaments mediating cell-cell adhesion.

Note: This product is for in vitro research use only