

## EAAT3 Rabbit mAb

Catalog No: #59860

Package Size: #59860-1 50ul #59860-2 100ul

Orders: order@signalwayantibody.com

Support: tech@signalwayantibody.com

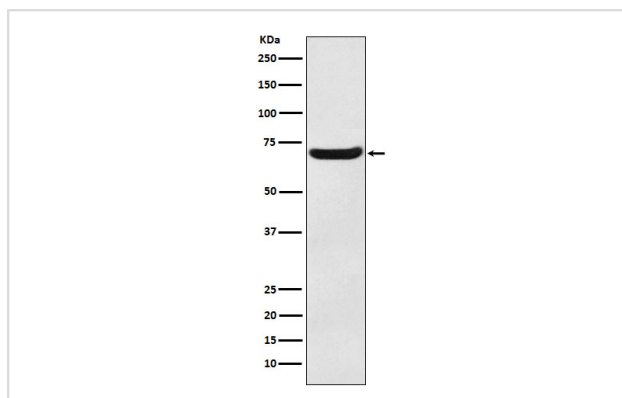
## Description

Product Name	EAAT3 Rabbit mAb
Host Species	Rabbit
Clonality	Monoclonal
Isotype	Rabbit IgG
Purification	Affinity-chromatography
Applications	WB IHC ICC/IF
Species Reactivity	Human Mouse Rat
Specificity	EAAT3 Antibody detects endogenous levels of total EAAT3
Immunogen Description	A synthesized peptide derived from human EAAT3
Other Names	SLC1A1, EAAC1, EAAT3, Eaac-1;
Accession No.	Uniprot:P43005
Uniprot	P43005
Formulation	Rabbit IgG in phosphate buffered saline , pH 7.4, 150mM NaCl, 0.02% sodium azide and 50% glycerol.
Storage	Store at +4°C short term. Store at -20°C long term. Avoid freeze / thaw cycle.

## Application Details

WB 1:1000~1:5000 IHC 1:100~1:500 ICC/IF 1:50~1:200

## Images



Western blot analysis of EAAT3 expression in Human fetal brain lysate.

## Product Description

Transports L-glutamate and also L- and D-aspartate. Essential for terminating the postsynaptic action of glutamate by rapidly removing released glutamate from the synaptic cleft. Acts as a symport by cotransporting sodium. Negatively regulated by ARL6IP5.

## Background

---

Transports L-glutamate and also L- and D-aspartate. Essential for terminating the postsynaptic action of glutamate by rapidly removing released glutamate from the synaptic cleft. Acts as a symport by cotransporting sodium. Negatively regulated by ARL6IP5.

---

Note: This product is for in vitro research use only