

## GDF15 Rabbit mAb

Catalog No: #59864

Package Size: #59864-1 50ul #59864-2 100ul

Orders: order@signalwayantibody.com

Support: tech@signalwayantibody.com

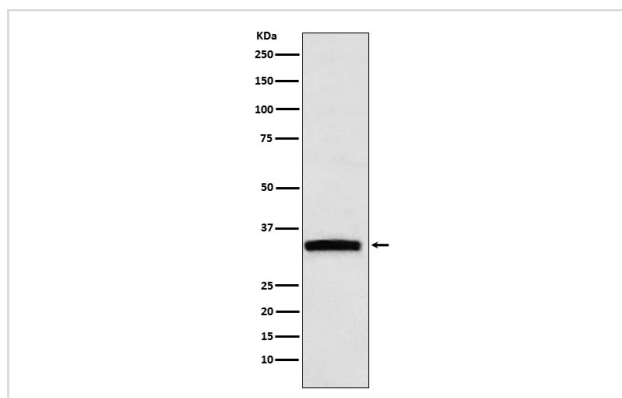
## Description

|                       |  |
|-----------------------|--|
| Product Name          | GDF15 Rabbit mAb   |
| Host Species          | Rabbit   |
| Clonality             | Monoclonal   |
| Isotype               | Rabbit IgG   |
| Purification          | Affinity-chromatography  |
| Applications          | WB   |
| Species Reactivity    | Human  |
| Specificity           | GDF15 Antibody detects endogenous levels of total GDF15  |
| Immunogen Description | A synthesized peptide derived from human GDF15   |
| Other Names           | GDF-15; growth differentiation factor 15; MIC-1; MIC1; NAG-1; PDF; PLAB; PTGFB;                    |
| Accession No.         | Uniprot:Q99988   |
| Uniprot               | Q99988   |
| Formulation           | Rabbit IgG in phosphate buffered saline , pH 7.4, 150mM NaCl, 0.02% sodium azide and 50% glycerol. |
| Storage               | Store at +4°C short term. Store at -20°C long term. Avoid freeze / thaw cycle.                     |

## Application Details

WB 1:500~1:2000

## Images



Western blot analysis of GDF15 expression in HepG2 cell lysate.

## Product Description

Highly expressed in placenta, with lower levels in prostate and colon and some expression in kidney.

## Background

Highly expressed in placenta, with lower levels in prostate and colon and some expression in kidney.

---

Note: This product is for in vitro research use only