

RACK1 Rabbit mAb

Catalog No: #59874

Package Size: #59874-1 50ul #59874-2 100ul

Orders: order@signalwayantibody.com

Support: tech@signalwayantibody.com

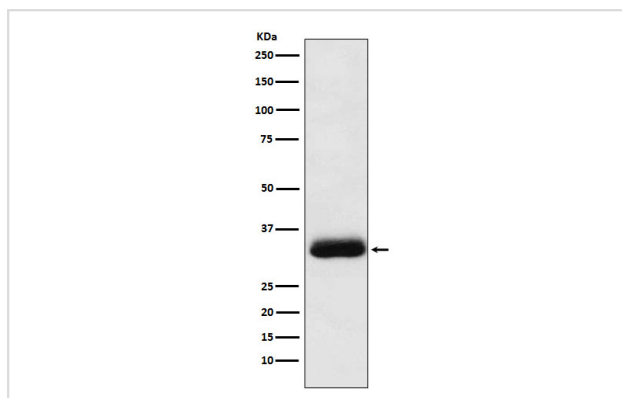
Description

Product Name	RACK1 Rabbit mAb
Host Species	Rabbit
Clonality	Monoclonal
Isotype	Rabbit IgG
Purification	Affinity-chromatography
Applications	WB IHC FC
Species Reactivity	Human Mouse Rat
Specificity	RACK1 Antibody detects endogenous levels of total RACK1
Immunogen Description	A synthesized peptide derived from human RACK1
Other Names	H12.3; HLC-7; PIG21; RACK1; Gnb2-rs1;
Accession No.	Uniprot:P63244
Uniprot	P63244
Formulation	Rabbit IgG in phosphate buffered saline , pH 7.4, 150mM NaCl, 0.02% sodium azide and 50% glycerol.
Storage	Store at +4°C short term. Store at -20°C long term. Avoid freeze / thaw cycle.

Application Details

WB 1:500~1:2000 IHC 1:50~1:200 FC 1:50

Images



Western blot analysis of RACK1 expression in HeLa cell lysate.

Product Description

Seems to bind protein kinase C acting as an intracellular receptor to anchor the activated PKC to the cytoskeleton. May be involved in up-regulation of the activity of kinases such as PKC via binding to KRT1.

Background

Seems to bind protein kinase C acting as an intracellular receptor to anchor the activated PKC to the cytoskeleton. May be involved in up-regulation of the activity of kinases such as PKC via binding to KRT1.

Note: This product is for in vitro research use only