

PERP Rabbit mAb

Catalog No: #59885

Package Size: #59885-1 50ul #59885-2 100ul

Orders: order@signalwayantibody.com

Support: tech@signalwayantibody.com

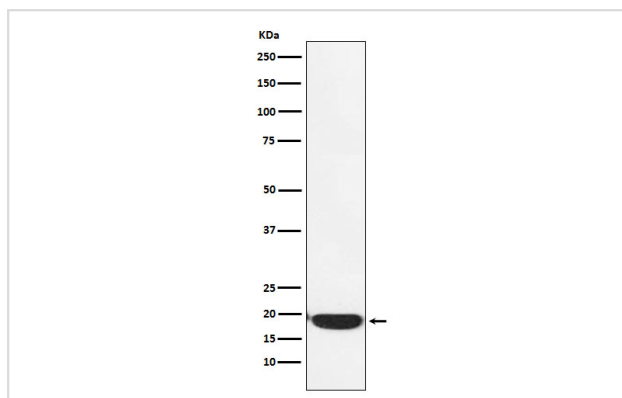
Description

Product Name	PERP Rabbit mAb
Host Species	Rabbit
Clonality	Monoclonal
Isotype	Rabbit IgG
Purification	Affinity-chromatography
Applications	WB ICC/IF
Species Reactivity	Human Mouse Rat
Specificity	PERP Antibody detects endogenous levels of total PERP
Immunogen Description	A synthesized peptide derived from human PERP
Other Names	KCP1; KRTCAP1; Perp; PIGPC1; THW;
Accession No.	Uniprot:Q96FX8
Uniprot	Q96FX8
Formulation	Rabbit IgG in phosphate buffered saline , pH 7.4, 150mM NaCl, 0.02% sodium azide and 50% glycerol.
Storage	Store at +4°C short term. Store at -20°C long term. Avoid freeze / thaw cycle.

Application Details

WB 1:500~1:2000 ICC/IF 1:50~1:200

Images



Western blot analysis of PERP expression in A431 cell lysate.

Product Description

Component of intercellular desmosome junctions. Plays a role in stratified epithelial integrity and cell-cell adhesion by promoting desmosome assembly. Plays a role as an effector in the TP53-dependent apoptotic pathway.

Background

Component of intercellular desmosome junctions. Plays a role in stratified epithelial integrity and cell-cell adhesion by promoting desmosome assembly. Plays a role as an effector in the TP53-dependent apoptotic pathway.

Note: This product is for in vitro research use only