

Exportin 5 Rabbit mAb

Catalog No: #59896

Package Size: #59896-1 50ul #59896-2 100ul

Orders: order@signalwayantibody.com

Support: tech@signalwayantibody.com

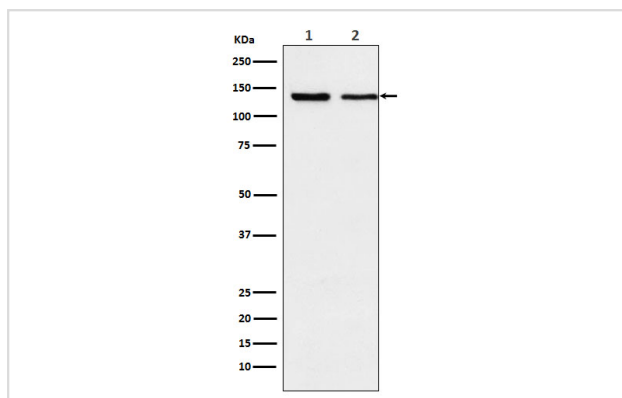
Description

Product Name	Exportin 5 Rabbit mAb
Host Species	Rabbit
Clonality	Monoclonal
Isotype	Rabbit IgG
Purification	Affinity-chromatography
Applications	WB IHC ICC/IF FC
Species Reactivity	Human Mouse Rat
Specificity	Exportin 5 Antibody detects endogenous levels of total Exportin 5
Immunogen Description	A synthesized peptide derived from human Exportin 5
Other Names	Exp5; Exportin 5; Ranbp21; xpo5;
Accession No.	Uniprot:Q9HAV4
Uniprot	Q9HAV4
Formulation	Rabbit IgG in phosphate buffered saline , pH 7.4, 150mM NaCl, 0.02% sodium azide and 50% glycerol.
Storage	Store at +4°C short term. Store at -20°C long term. Avoid freeze / thaw cycle.

Application Details

WB 1:500~1:2000 IHC 1:50~1:200 ICC/IF 1:50~1:200 FC 1:50

Images



Western blot analysis of Exportin 5 expression in (1) K562 cell lysate; (2) NIH/3T3 cell lysate.

Product Description

Mediates the nuclear export of proteins bearing a double-stranded RNA binding domain (dsRBD) and double-stranded RNAs (cargos). XPO5 in the nucleus binds cooperatively to the RNA and to the GTPase Ran in its active GTP-bound form.

Background

Mediates the nuclear export of proteins bearing a double-stranded RNA binding domain (dsRBD) and double-stranded RNAs (cargos). XPO5 in the nucleus binds cooperatively to the RNA and to the GTPase Ran in its active GTP-bound form.

Note: This product is for in vitro research use only