

MARK2 Rabbit mAb

Catalog No: #59900

Package Size: #59900-1 50ul #59900-2 100ul

Orders: order@signalwayantibody.com

Support: tech@signalwayantibody.com

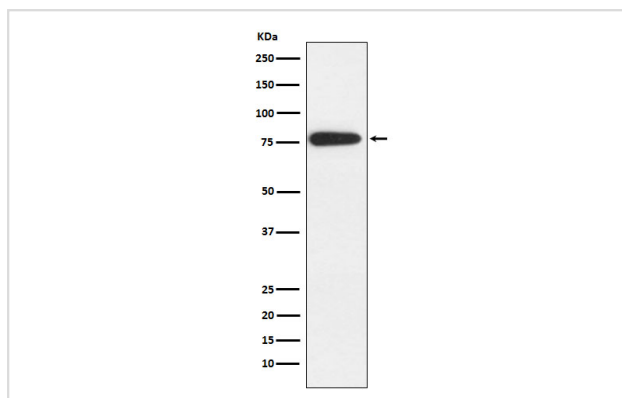
Description

Product Name	MARK2 Rabbit mAb
Host Species	Rabbit
Clonality	Monoclonal
Isotype	Rabbit IgG
Purification	Affinity-chromatography
Applications	WB FC
Species Reactivity	Human Mouse Rat
Specificity	MARK2 Antibody detects endogenous levels of total MARK2
Immunogen Description	A synthesized peptide derived from human MARK2
Other Names	EMK1; Mark2; PAR 1; Par1b;
Accession No.	Uniprot:Q7KZ17
Uniprot	Q7KZ17
Formulation	Rabbit IgG in phosphate buffered saline , pH 7.4, 150mM NaCl, 0.02% sodium azide and 50% glycerol.
Storage	Store at +4°C short term. Store at -20°C long term. Avoid freeze / thaw cycle.

Application Details

WB 1:500~1:2000 FC 1:100

Images



Western blot analysis of MARK2 expression in Neuro-2a cell lysate.

Product Description

Role in epithelial morphogenesis. Modulates the developmental decision to build a columnar versus a hepatic epithelial cell apparently by promoting a switch from a direct to a transcytotic mode of apical protein delivery.

Background

Role in epithelial morphogenesis. Modulates the developmental decision to build a columnar versus a hepatic epithelial cell apparently by promoting a switch from a direct to a transcytotic mode of apical protein delivery.

Note: This product is for in vitro research use only