

eEF1A1 Rabbit mAb

Catalog No: #59912

Package Size: #59912-1 50ul #59912-2 100ul

Orders: order@signalwayantibody.com

Support: tech@signalwayantibody.com

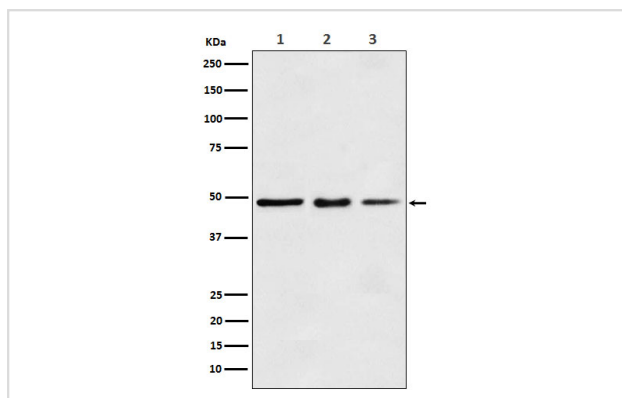
Description

Product Name	eEF1A1 Rabbit mAb
Host Species	Rabbit
Clonality	Monoclonal
Isotype	Rabbit IgG
Purification	Affinity-chromatography
Applications	WB IHC ICC/IF IP FC
Species Reactivity	Human Mouse Rat
Specificity	eEF1A1 Antibody detects endogenous levels of total eEF1A1
Immunogen Description	A synthesized peptide derived from human eEF1A1
Other Names	EEF1A1; CCS-3; CCS3; EEF-1; EEF1A; EF-Tu; EF1A; GRAF-1EF; LENG7; PTI1;eEF1A-1;
Accession No.	Uniprot:P68104
Uniprot	P68104
Formulation	Rabbit IgG in phosphate buffered saline , pH 7.4, 150mM NaCl, 0.02% sodium azide and 50% glycerol.
Storage	Store at +4°C short term. Store at -20°C long term. Avoid freeze / thaw cycle.

Application Details

WB 1000~1:5000 IHC 1:50~1:200 ICC/IF 1:50~1:200 IP 1:50 FC 1:50

Images



Western blot analysis of eEF1A1 expression in (1) MCF7 cell lysate; (2) Mouse kidney lysate; (2) Rat spleen lysate.

Product Description

This protein promotes the GTP-dependent binding of aminoacyl-tRNA to the A-site of ribosomes during protein biosynthesis.

Background

This protein promotes the GTP-dependent binding of aminoacyl-tRNA to the A-site of ribosomes during protein biosynthesis.

Note: This product is for in vitro research use only