

MCT1 Rabbit mAb

Catalog No: #59918

Package Size: #59918-1 50ul #59918-2 100ul

Orders: order@signalwayantibody.com

Support: tech@signalwayantibody.com

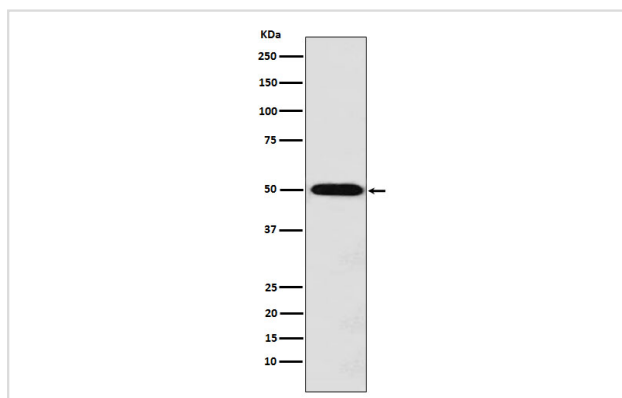
Description

Product Name	MCT1 Rabbit mAb
Host Species	Rabbit
Clonality	Monoclonal
Isotype	Rabbit IgG
Purification	Affinity-chromatography
Applications	WB
Species Reactivity	Human
Specificity	Monocarboxylic acid transporter 1 Antibody detects endogenous levels of total Monocarboxylic acid transporter 1
Immunogen Description	A synthesized peptide derived from human Monocarboxylic acid transporter 1
Other Names	HHF7; MCT 1; MCT; Slc16a1;
Accession No.	Uniprot:P53985
Uniprot	P53985
Formulation	Rabbit IgG in phosphate buffered saline , pH 7.4, 150mM NaCl, 0.02% sodium azide and 50% glycerol.
Storage	Store at +4°C short term. Store at -20°C long term. Avoid freeze / thaw cycle.

Application Details

WB 1:500~1:2000

Images



Western blot analysis of Monocarboxylic acid transporter 1 expression in Jurkat cell lysate.

Product Description

Proton-linked monocarboxylate transporter. Catalyzes the rapid transport across the plasma membrane of many monocarboxylates such as lactate, pyruvate, branched-chain oxo acids derived from leucine, valine and isoleucine, and the ketone bodies acetoacetate, beta-hydroxybutyrate and acetate.

Background

Proton-linked monocarboxylate transporter. Catalyzes the rapid transport across the plasma membrane of many monocarboxylates such as lactate, pyruvate, branched-chain oxo acids derived from leucine, valine and isoleucine, and the ketone bodies acetoacetate, beta-hydroxybutyrate and acetate.

Note: This product is for in vitro research use only