

LIN28 Rabbit mAb

Catalog No: #59923

Package Size: #59923-1 50ul #59923-2 100ul

Orders: order@signalwayantibody.com

Support: tech@signalwayantibody.com

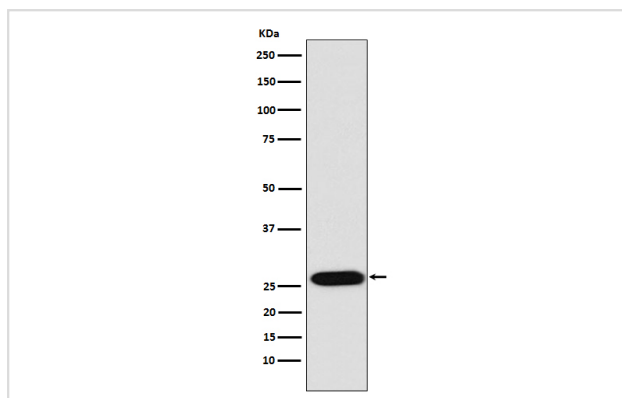
Description

Product Name	LIN28 Rabbit mAb
Host Species	Rabbit
Clonality	Monoclonal
Isotype	Rabbit IgG
Purification	Affinity-chromatography
Applications	WB IHC ICC/IF IP FC
Species Reactivity	Human
Specificity	LIN28 Antibody detects endogenous levels of total LIN28
Immunogen Description	A synthesized peptide derived from human LIN28
Other Names	Protein lin-28 homolog A; LIN28A; CSDD1; LIN28; ZCCHC1;
Accession No.	Uniprot:Q9H9Z2
Uniprot	Q9H9Z2
Formulation	Rabbit IgG in phosphate buffered saline , pH 7.4, 150mM NaCl, 0.02% sodium azide and 50% glycerol.
Storage	Store at +4°C short term. Store at -20°C long term. Avoid freeze / thaw cycle.

Application Details

WB 1:1000~1:5000 IHC 1:50~1:200 ICC/IF 1:100~1:500 IP 1:50 FC:1:50

Images



Western blot analysis of LIN28 expression in NCCIT cell lysate.

Product Description

Involved in the timing of developmental events and choice of stage specific cell fates. Acts as a suppressor of microRNA (miRNA) biogenesis by specifically binding the precursor let-7 (pre-let-7), a miRNA precursor. Acts by binding pre-let-7 and recruiting ZCCHC11/TUT4 uridylyltransferase, leading to the terminal uridylation of pre-let-7.

Background

Involved in the timing of developmental events and choice of stage specific cell fates. Acts as a suppressor of microRNA (miRNA) biogenesis by specifically binding the precursor let-7 (pre-let-7), a miRNA precursor. Acts by binding pre-let-7 and recruiting ZCCHC11/TUT4 uridylyltransferase, leading to the terminal uridylation of pre-let-7.

Note: This product is for in vitro research use only