

## CD10 Rabbit mAb

Catalog No: #59926

Package Size: #59926-1 50ul #59926-2 100ul

Orders: order@signalwayantibody.com

Support: tech@signalwayantibody.com

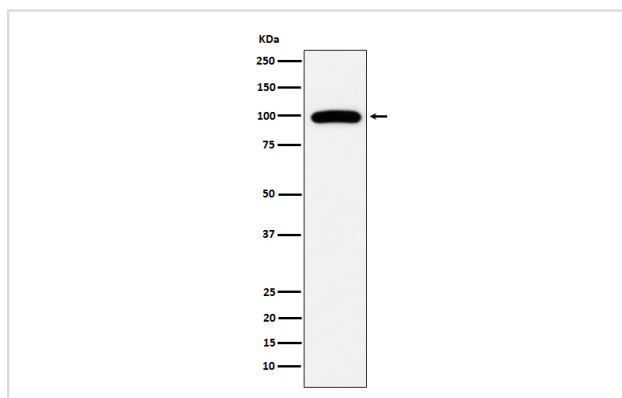
## Description

Product Name	CD10 Rabbit mAb
Host Species	Rabbit
Clonality	Monoclonal
Isotype	Rabbit IgG
Purification	Affinity-chromatography
Applications	WB IHC IP
Species Reactivity	Human Rat
Specificity	CD10 Antibody detects endogenous levels of total CD10
Immunogen Description	A synthesized peptide derived from human CD10
Other Names	Atriopeptidase; CALLA; CD10; CD10 antigen; Enkephalinase; EPN; Membrane metallo endopeptidase (neutral endopeptidase, enkephalinase, CALLA, CD10); CALLA CD10; NEP; Neprilysin; Neutral endopeptidase;
Accession No.	Uniprot:P08473
Uniprot	P08473
Formulation	Rabbit IgG in phosphate buffered saline , pH 7.4, 150mM NaCl, 0.02% sodium azide and 50% glycerol.
Storage	Store at +4°C short term. Store at -20°C long term. Avoid freeze / thaw cycle.

## Application Details

WB 1:500~1:2000 IHC 1:50~1:200 IP 1:50

## Images



Western blot analysis of CD10 expression in Ramos cell lysate.

## Product Description

CD10 is a transmembrane type II molecule and functions as a metallo-peptidase requiring zinc. Specifically, CD10 cleaves 1-3 amino-terminal amino acids from peptides with a preference for neutral amino acids (valine, iso-leucine, phenylalanine, leucine or alanine). Involved in the degradation of atrial natriuretic factor (ANF).

## Background

---

CD10 is a transmembrane type II molecule and functions as a metallo-peptidase requiring zinc. Specifically, CD10 cleaves 1-3 amino-terminal amino acids from peptides with a preference for neutral amino acids (valine, iso-leucine, phenylalanine, leucine or alanine). Involved in the degradation of atrial natriuretic factor (ANF).

---

Note: This product is for in vitro research use only