

IBA1 Rabbit mAb

Catalog No: #59928

Package Size: #59928-1 50ul #59928-2 100ul

Orders: order@signalwayantibody.comSupport: tech@signalwayantibody.com

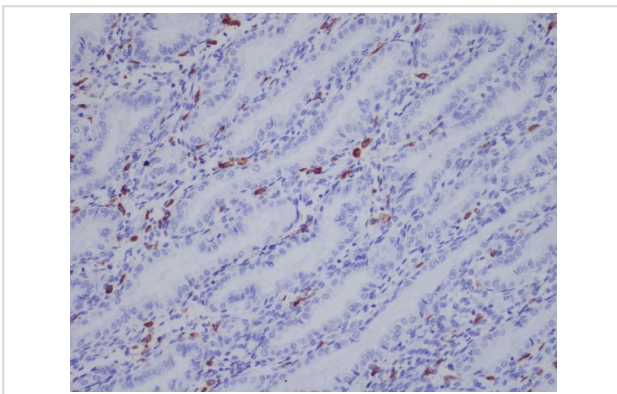
Description

Product Name	IBA1 Rabbit mAb
Host Species	Rabbit
Clonality	Monoclonal
Isotype	Rabbit IgG
Purification	Affinity-chromatography
Applications	WB IHC ICC/IF FC
Species Reactivity	Human
Specificity	IBA1 Antibody detects endogenous levels of total IBA1
Immunogen Description	A synthesized peptide derived from human IBA1
Other Names	IBA1; IRT1; AIF-1; IRT-1;
Accession No.	Uniprot:P55008
Uniprot	P55008
Formulation	Rabbit IgG in phosphate buffered saline , pH 7.4, 150mM NaCl, 0.02% sodium azide and 50% glycerol.
Storage	Store at +4°C short term. Store at -20°C long term. Avoid freeze / thaw cycle.

Application Details

WB 1:500~1:2000 IHC 1:50~1:200 ICC/IF 1:50~1:200 FC 1:100

Images



Immunohistochemical analysis of paraffin-embedded human uterus, using IBA1 Antibody.

Product Description

Actin-binding protein that enhances membrane ruffling and RAC activation. Enhances the actin-bundling activity of LCP1. Binds calcium. Plays a role in RAC signaling and in phagocytosis.

Background

Actin-binding protein that enhances membrane ruffling and RAC activation. Enhances the actin-bundling activity of LCP1. Binds calcium. Plays a role in RAC signaling and in phagocytosis.

Note: This product is for in vitro research use only