

## EIF4E Rabbit mAb

Catalog No: #59935

Package Size: #59935-1 50ul #59935-2 100ul

Orders: order@signalwayantibody.com

Support: tech@signalwayantibody.com

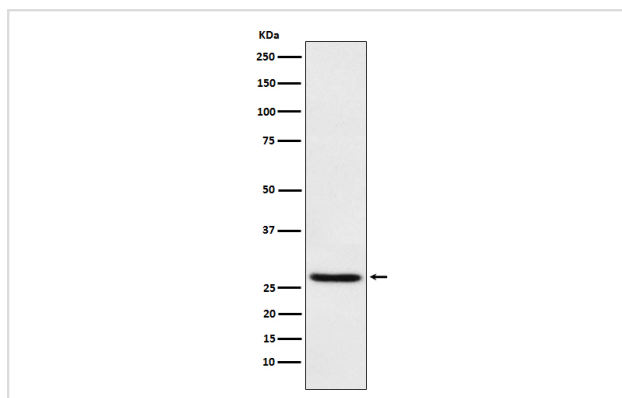
## Description

Product Name	EIF4E Rabbit mAb
Host Species	Rabbit
Clonality	Monoclonal
Isotype	Rabbit IgG
Purification	Affinity-chromatography
Applications	WB IHC IP FC
Species Reactivity	Human Mouse Rat
Specificity	EIF4E Antibody detects endogenous levels of total EIF4E
Immunogen Description	A synthesized peptide derived from human EIF4E
Other Names	CBP; eIF-4E; eIF-4F 25 kDa subunit; EIF4F; EIF4E1; EIF4EL1; MGC111573; EIF4E;
Accession No.	Uniprot:P06730
Uniprot	P06730
Formulation	Rabbit IgG in phosphate buffered saline , pH 7.4, 150mM NaCl, 0.02% sodium azide and 50% glycerol.
Storage	Store at +4°C short term. Store at -20°C long term. Avoid freeze / thaw cycle.

## Application Details

WB 1:100~1:5000 IHC 1:100~1:500 IP 1:30 FC 1:40

## Images



Western blot analysis of EIF4E expression in 293 cell lysate.

## Product Description

eIF4E, a protein modulates translation of maternal mRNAs in early embryos before the onset of zygotic transcription. eIF4E also influences the overall rate of translation. eIF4E binds to the 7 methyl GTP cap structure of eukaryotic mRNAs. Phosphorylation of eIF4E on serine 209 regulates the affinity of this protein for the 7 methyl GTP cap and/or RNA. Phosphorylation also enhances the interaction of eIF4E with eIF4G, which form a complex known as eIF4F. eIF4E phosphorylation is correlated with increased translational rate in a number of cell types.

## Background

---

eIF4E, a protein modulates translation of maternal mRNAs in early embryos before the onset of zygotic transcription. eIF4E also influences the overall rate of translation. eIF4E binds to the 7 methyl GTP cap structure of eukaryotic mRNAs. Phosphorylation of eIF4E on serine 209 regulates the affinity of this protein for the 7 methyl GTP cap and/or RNA. Phosphorylation also enhances the interaction of eIF4E with eIF4G, which form a complex known as eIF4F. eIF4E phosphorylation is correlated with increased translational rate in a number of cell types.

---

Note: This product is for in vitro research use only