

RFA2 Rabbit mAb

Catalog No: #59940

Package Size: #59940-1 50ul #59940-2 100ul

Orders: order@signalwayantibody.com

Support: tech@signalwayantibody.com

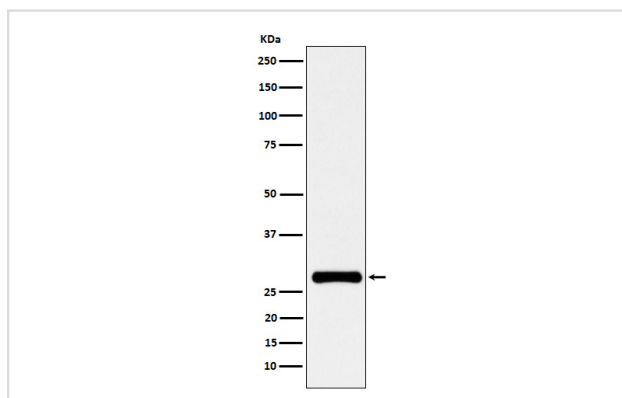
Description

Product Name	RFA2 Rabbit mAb
Host Species	Rabbit
Clonality	Monoclonal
Isotype	Rabbit IgG
Purification	Affinity-chromatography
Applications	WB IHC IP
Species Reactivity	Mouse, Rat, Human
Specificity	RFA2 Antibody detects endogenous levels of total RFA2
Immunogen Description	A synthesized peptide derived from human RFA2
Other Names	p32; p34; REPA2; Replication factor A protein 2; Rf-A2; RFA; RP-A p32; RP-A p34; RP21C; RPA; Rpa2; RPA32; RPA34; RpLP1; RpP2;
Accession No.	Uniprot:P15927
Uniprot	P15927
Formulation	Rabbit IgG in phosphate buffered saline , pH 7.4, 150mM NaCl, 0.02% sodium azide and 50% glycerol.
Storage	Store at +4°C short term. Store at -20°C long term. Avoid freeze / thaw cycle.

Application Details

WB 1:1000~1:5000 IHC 1:50~1:200 IP 1:30

Images



Western blot analysis of RFA2 expression in HeLa cell lysate.

Product Description

Required for DNA recombination, repair and replication. The activity of RP-A is mediated by single-stranded DNA binding and protein interactions.

Background

Required for DNA recombination, repair and replication. The activity of RP-A is mediated by single-stranded DNA binding and protein interactions.

Note: This product is for in vitro research use only