

## POLD1 Rabbit mAb

Catalog No: #59943

Package Size: #59943-1 50ul #59943-2 100ul

Orders: order@signalwayantibody.com

Support: tech@signalwayantibody.com

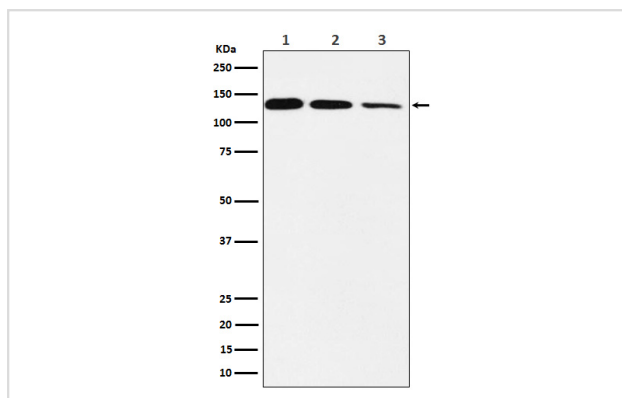
## Description

Product Name	POLD1 Rabbit mAb
Host Species	Rabbit
Clonality	Monoclonal
Isotype	Rabbit IgG
Purification	Affinity-chromatography
Applications	WB IHC ICC/IF FC
Species Reactivity	Human Mouse Rat
Specificity	POLD1 Antibody detects endogenous levels of total POLD1
Immunogen Description	A synthesized peptide derived from human POLD1
Other Names	CDC2; CRCS10; MDPL; POLD; POLD1;
Accession No.	Uniprot:P28340
Uniprot	P28340
Formulation	Rabbit IgG in phosphate buffered saline , pH 7.4, 150mM NaCl, 0.02% sodium azide and 50% glycerol.
Storage	Store at +4°C short term. Store at -20°C long term. Avoid freeze / thaw cycle.

## Application Details

WB 1:500~1:2000 IHC 1:50~1:200 ICC/IF 1:50~1:200 FC 1:100

## Images



Western blot analysis of DNA Polymerase delta, catalytic subunit expression in (1) Jurkat cell lysate; (2) Raw264.7 cell lysate; (3) C6 cell lysate.

## Product Description

Possesses two enzymatic activities: DNA synthesis (polymerase) and an exonucleolytic activity that degrades single stranded DNA in the 3'- to 5'-direction. Required with its accessory proteins (proliferating cell nuclear antigen (PCNA) and replication factor C (RFC) or activator 1) for leading strand synthesis. Also involved in completing Okazaki fragments initiated by the DNA polymerase alpha/primase complex.

## Background

---

Possesses two enzymatic activities: DNA synthesis (polymerase) and an exonucleolytic activity that degrades single stranded DNA in the 3'- to 5'-direction. Required with its accessory proteins (proliferating cell nuclear antigen (PCNA) and replication factor C (RFC) or activator 1) for leading strand synthesis. Also involved in completing Okazaki fragments initiated by the DNA polymerase alpha/primase complex.

---

Note: This product is for in vitro research use only