

Syntaxin 4 Rabbit mAb

Catalog No: #59944

Package Size: #59944-1 50ul #59944-2 100ul

Orders: order@signalwayantibody.com

Support: tech@signalwayantibody.com

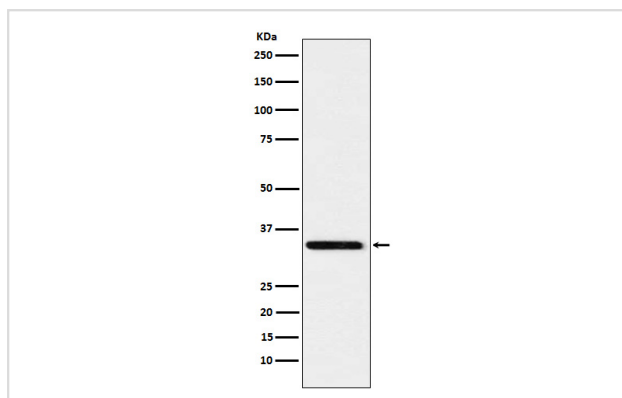
Description

Product Name	Syntaxin 4 Rabbit mAb
Host Species	Rabbit
Clonality	Monoclonal
Isotype	Rabbit IgG
Purification	Affinity-chromatography
Applications	WB
Species Reactivity	Human Mouse Rat
Specificity	Syntaxin 4 Antibody detects endogenous levels of total Syntaxin 4
Immunogen Description	A synthesized peptide derived from human Syntaxin 4
Other Names	p35 2; PLACENTAL; Stx4; STX4A; Syntaxin 4; syntaxin 4A;
Accession No.	Uniprot:Q12846
Uniprot	Q12846
Formulation	Rabbit IgG in phosphate buffered saline , pH 7.4, 150mM NaCl, 0.02% sodium azide and 50% glycerol.
Storage	Store at +4°C short term. Store at -20°C long term. Avoid freeze / thaw cycle.

Application Details

WB 1:500~1:2000

Images



Western blot analysis of Syntaxin 4 expression in A431 cell lysate.

Product Description

Plasma membrane t-SNARE that mediates docking of transport vesicles. Necessary for the translocation of SLC2A4 from intracellular vesicles to the plasma membrane.

Background

Plasma membrane t-SNARE that mediates docking of transport vesicles. Necessary for the translocation of SLC2A4 from intracellular vesicles to the plasma membrane.

Note: This product is for in vitro research use only