

Synapsin II Rabbit mAb

Catalog No: #59949

Package Size: #59949-1 50ul #59949-2 100ul

Orders: order@signalwayantibody.com

Support: tech@signalwayantibody.com

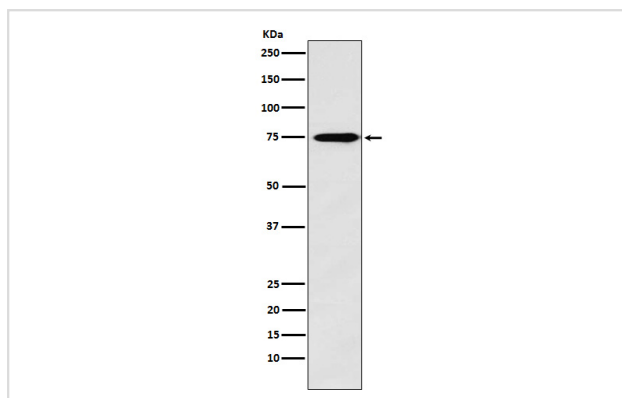
Description

Product Name	Synapsin II Rabbit mAb
Host Species	Rabbit
Clonality	Monoclonal
Isotype	Rabbit IgG
Purification	Affinity-chromatography
Applications	WB IHC
Species Reactivity	Human Mouse Rat
Specificity	Synapsin II Antibody detects endogenous levels of total Synapsin II
Immunogen Description	A synthesized peptide derived from human Synapsin II
Other Names	SYN 2; SYN II; SYN IIa; SYN IIb; SYN2; Synapsin2; SynapsinII; SYNII; SYNIIa; SYNIIb;
Accession No.	Uniprot:Q92777
Uniprot	Q92777
Formulation	Rabbit IgG in phosphate buffered saline , pH 7.4, 150mM NaCl, 0.02% sodium azide and 50% glycerol.
Storage	Store at +4°C short term. Store at -20°C long term. Avoid freeze / thaw cycle.

Application Details

WB 1:1000~1:5000 IHC 1:50~1:200

Images



Western blot analysis of Synapsin II expression in Human fetal brain lysate.

Product Description

Synapsin II is a member of the synapsin gene family. Synapsins are neuronal phosphoproteins which associate with the cytoplasmic surface of synaptic vesicles.

Background

Synapsin II is a member of the synapsin gene family. Synapsins are neuronal phosphoproteins which associate with the cytoplasmic surface of synaptic vesicles.

Note: This product is for in vitro research use only