

Synapsin II Rabbit mAb

Catalog No: #59966

Package Size: #59966-1 50ul #59966-2 100ul

Orders: order@signalwayantibody.comSupport: tech@signalwayantibody.com

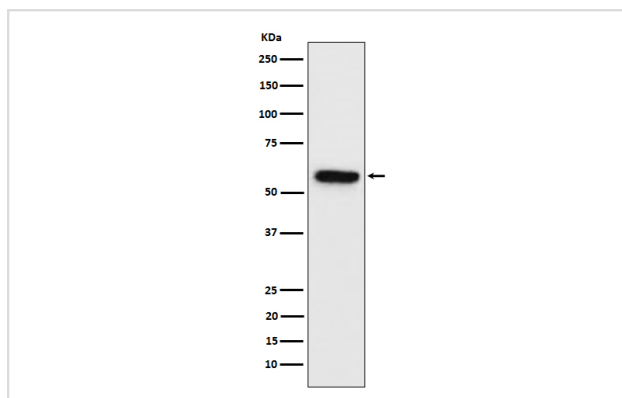
Description

Product Name	Synapsin II Rabbit mAb
Host Species	Rabbit
Clonality	Monoclonal
Isotype	Rabbit IgG
Purification	Affinity-chromatography
Applications	WB
Species Reactivity	Human Mouse Rat
Specificity	Synapsin II Antibody detects endogenous levels of total Synapsin II
Immunogen Description	A synthesized peptide derived from human Synapsin II
Other Names	SYN2; Synapsin 2; Synapsin2; SynapsinII; SYNII; SYNIIa; SYNIIb;
Accession No.	Uniprot:Q92777
Uniprot	Q92777
Formulation	Rabbit IgG in phosphate buffered saline , pH 7.4, 150mM NaCl, 0.02% sodium azide and 50% glycerol.
Storage	Store at +4°C short term. Store at -20°C long term. Avoid freeze / thaw cycle.

Application Details

WB 1:500~1:2000

Images



Western blot analysis of Synapsin II expression in Neuro-2a cell lysate.

Product Description

Neuronal phosphoprotein that coats synaptic vesicles, binds to the cytoskeleton, and is believed to function in the regulation of neurotransmitter release. May play a role in noradrenaline secretion by sympathetic neurons (By similarity).

Background

Neuronal phosphoprotein that coats synaptic vesicles, binds to the cytoskeleton, and is believed to function in the regulation of neurotransmitter release. May play a role in noradrenaline secretion by sympathetic neurons (By similarity).

Note: This product is for in vitro research use only