

PKA R2 Rabbit mAb

Catalog No: #59968

Package Size: #59968-1 50ul #59968-2 100ul

Orders: order@signalwayantibody.com

Support: tech@signalwayantibody.com

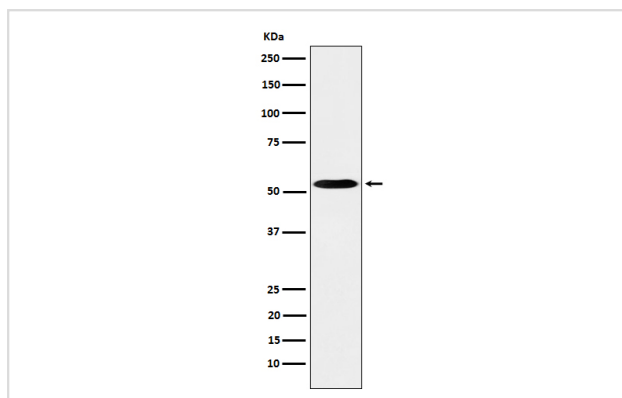
Description

Product Name	PKA R2 Rabbit mAb
Host Species	Rabbit
Clonality	Monoclonal
Isotype	Rabbit IgG
Purification	Affinity-chromatography
Applications	WB IHC ICC/IF IP
Species Reactivity	Human Cow
Specificity	PKA R2 Antibody detects endogenous levels of total PKA R2
Immunogen Description	A synthesized peptide derived from human PKA R2
Other Names	KAP2; PKR2; PRKAR2; PRKAR2A;
Accession No.	Uniprot:P13861
Uniprot	P13861
Formulation	Rabbit IgG in phosphate buffered saline , pH 7.4, 150mM NaCl, 0.02% sodium azide and 50% glycerol.
Storage	Store at +4°C short term. Store at -20°C long term. Avoid freeze / thaw cycle.

Application Details

WB 1:500~1:2000 IHC 1:50~1:200 ICC/IF 1:50~1:200 IP 1:50

Images



Western blot analysis of PKA R2 expression in K562 cell lysate.

Product Description

Regulatory subunit of the cAMP-dependent protein kinases involved in cAMP signaling in cells. Type II regulatory chains mediate membrane association by binding to anchoring proteins, including the MAP2 kinase.

Background

Regulatory subunit of the cAMP-dependent protein kinases involved in cAMP signaling in cells. Type II regulatory chains mediate membrane association by binding to anchoring proteins, including the MAP2 kinase.

Note: This product is for in vitro research use only