

## ABAT Rabbit mAb

Catalog No: #59972

Package Size: #59972-1 50ul #59972-2 100ul

Orders: order@signalwayantibody.com

Support: tech@signalwayantibody.com

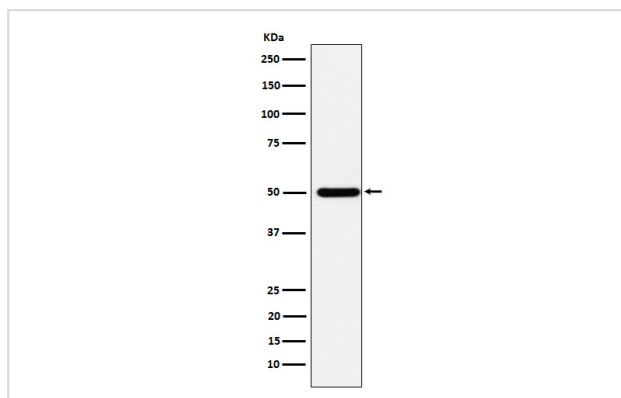
## Description

Product Name	ABAT Rabbit mAb
Host Species	Rabbit
Clonality	Monoclonal
Isotype	Rabbit IgG
Purification	Affinity-chromatography
Applications	WB IHC IP
Species Reactivity	Human Mouse Rat
Specificity	ABAT Antibody detects endogenous levels of total ABAT
Immunogen Description	A synthesized peptide derived from human ABAT
Other Names	ABAT; GABA transaminase; GABA transferase; GABAT; LAIBAT;
Accession No.	Uniprot:P80404
Uniprot	P80404
Formulation	Rabbit IgG in phosphate buffered saline , pH 7.4, 150mM NaCl, 0.02% sodium azide and 50% glycerol.
Storage	Store at +4°C short term. Store at -20°C long term. Avoid freeze / thaw cycle.

## Application Details

WB 1:500~1:2000 IHC 1:50~1:200 IP 1:50

## Images



Western blot analysis of ABAT expression in HepG2 cell lysate.

## Product Description

Catalyzes the conversion of gamma-aminobutyrate and L-beta-aminoisobutyrate to succinate semialdehyde and methylmalonate semialdehyde, respectively. Can also convert delta-aminovalerate and beta-alanine.

## Background

---

Catalyzes the conversion of gamma-aminobutyrate and L-beta-aminoisobutyrate to succinate semialdehyde and methylmalonate semialdehyde, respectively. Can also convert delta-aminovalerate and beta-alanine.

---

Note: This product is for in vitro research use only