

XLF Rabbit mAb

Catalog No: #59974

Package Size: #59974-1 50ul #59974-2 100ul

Orders: order@signalwayantibody.com

Support: tech@signalwayantibody.com

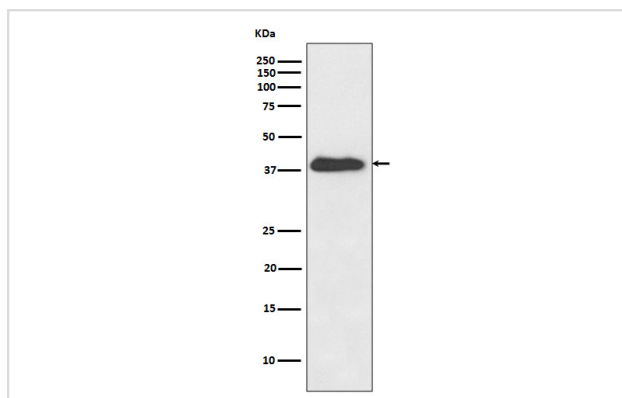
Description

Product Name	XLF Rabbit mAb
Host Species	Rabbit
Clonality	Monoclonal
Isotype	Rabbit IgG
Purification	Affinity-chromatography
Applications	WB IHC ICC/IF FC
Species Reactivity	Human Mouse Rat
Specificity	XLF Antibody detects endogenous levels of total XLF
Immunogen Description	A synthesized peptide derived from human XLF
Other Names	Cernunno; Nhej1; Non homologous end joining factor 1; Protein cernunnos; XLF; XRCC4 like factor;
Accession No.	Uniprot:Q9H9Q4
Uniprot	Q9H9Q4
Formulation	Rabbit IgG in phosphate buffered saline , pH 7.4, 150mM NaCl, 0.02% sodium azide and 50% glycerol.
Storage	Store at +4°C short term. Store at -20°C long term. Avoid freeze / thaw cycle.

Application Details

WB 1:1000~1:5000 IHC 1:50~1:200 ICC/IF 1:50~1:200 FC 1:50

Images



Western blot analysis of XLF expression in Jurkat cell lysate.

Product Description

DNA repair protein involved in DNA nonhomologous end joining (NHEJ) required for double-strand break (DSB) repair and V(D)J recombination.

Background

DNA repair protein involved in DNA nonhomologous end joining (NHEJ) required for double-strand break (DSB) repair and V(D)J recombination.

Note: This product is for in vitro research use only