

## Lamin A/C Rabbit mAb

Catalog No: #59983

Package Size: #59983-1 50ul #59983-2 100ul

Orders: [order@signalwayantibody.com](mailto:order@signalwayantibody.com)Support: [tech@signalwayantibody.com](mailto:tech@signalwayantibody.com)

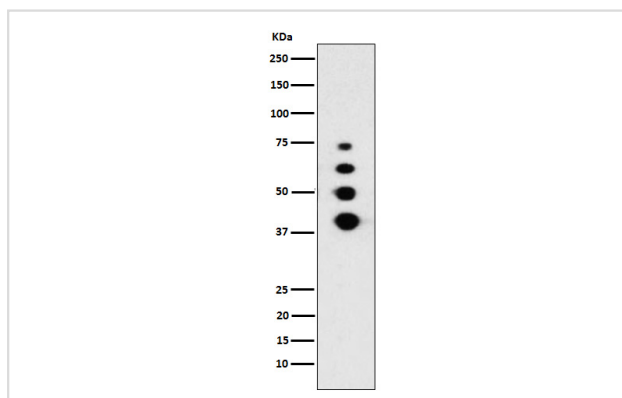
## Description

Product Name	Lamin A/C Rabbit mAb
Host Species	Rabbit
Clonality	Monoclonal
Isotype	Rabbit IgG
Purification	Affinity-chromatography
Applications	WB IHC ICC/IF FC
Species Reactivity	Human Mouse Rat
Specificity	Lamin A/C Antibody detects endogenous levels of total Lamin A/C
Immunogen Description	A synthesized peptide derived from human Lamin A/C
Other Names	CDCD1; CDDC; CMD1A; CMT2B1; EMD2; FPL; FPLD; FPLD2; HGPS; IDC; Lamin A; Lamin A/C; Lamin C; LDP1; LFP; LGMD1B; LMN1; LMNA; LMNC; LMNL1; PRO1;
Accession No.	Uniprot:P02545
Uniprot	P02545
Formulation	Rabbit IgG in phosphate buffered saline , pH 7.4, 150mM NaCl, 0.02% sodium azide and 50% glycerol.
Storage	Store at +4°C short term. Store at -20°C long term. Avoid freeze / thaw cycle.

## Application Details

WB 1:500~1:2000 IHC 1:50~1:200 ICC/IF 1:50~1:200 FC 1:50

## Images



Western blot analysis of Lamin A/C expression in HeLa cell treated with staurosporine.

## Product Description

Lamins are components of the nuclear lamina, a fibrous layer on the nucleoplasmic side of the inner nuclear membrane, which is thought to provide a framework for the nuclear envelope and may also interact with chromatin.

## Background

---

Lamins are components of the nuclear lamina, a fibrous layer on the nucleoplasmic side of the inner nuclear membrane, which is thought to provide a framework for the nuclear envelope and may also interact with chromatin.

---

Note: This product is for in vitro research use only