

MT-ND1 Rabbit mAb

Catalog No: #59990

Package Size: #59990-1 50ul #59990-2 100ul

Orders: order@signalwayantibody.com

Support: tech@signalwayantibody.com

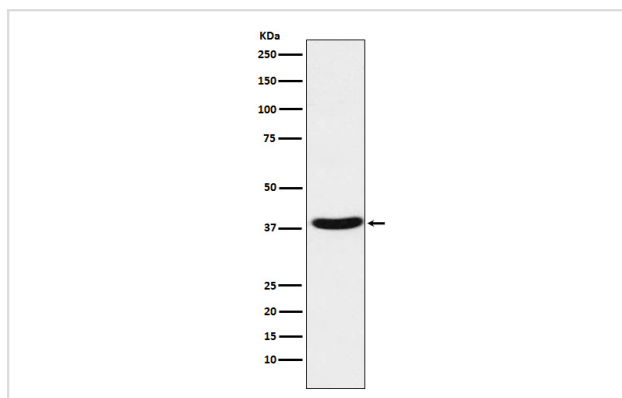
Description

Product Name	MT-ND1 Rabbit mAb
Host Species	Rabbit
Clonality	Monoclonal
Isotype	Rabbit IgG
Purification	Affinity-chromatography
Applications	WB
Species Reactivity	Human Mouse Rat
Specificity	MT-ND1 Antibody detects endogenous levels of total MT-ND1
Immunogen Description	A synthesized peptide derived from human MT-ND1
Other Names	MT-ND1; MTND1; NAD1; NADH1; ND1;
Accession No.	Uniprot:P03886
Uniprot	P03886
Formulation	Rabbit IgG in phosphate buffered saline , pH 7.4, 150mM NaCl, 0.02% sodium azide and 50% glycerol.
Storage	Store at +4°C short term. Store at -20°C long term. Avoid freeze / thaw cycle.

Application Details

WB 1:500~1:2000

Images



Western blot analysis of MT-ND1 expression in Human fetal muscle lysate.

Product Description

Core subunit of the mitochondrial membrane respiratory chain NADH dehydrogenase (Complex I) that is believed to belong to the minimal assembly required for catalysis. Complex I functions in the transfer of electrons from NADH to the respiratory chain. The immediate electron acceptor for the enzyme is believed to be ubiquinone.

Background

Core subunit of the mitochondrial membrane respiratory chain NADH dehydrogenase (Complex I) that is believed to belong to the minimal assembly required for catalysis. Complex I functions in the transfer of electrons from NADH to the respiratory chain. The immediate electron acceptor for the enzyme is believed to be ubiquinone.

Note: This product is for in vitro research use only