

## NDUFS1 Rabbit mAb

Catalog No: #60001

Package Size: #60001-1 50ul #60001-2 100ul

Orders: order@signalwayantibody.com

Support: tech@signalwayantibody.com

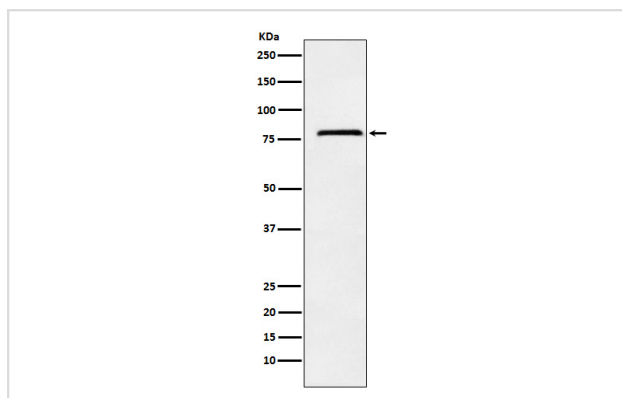
## Description

Product Name	NDUFS1 Rabbit mAb
Host Species	Rabbit
Clonality	Monoclonal
Isotype	Rabbit IgG
Purification	Affinity-chromatography
Applications	WB IHC ICC/IF IP FC
Species Reactivity	Human Mouse Rat
Specificity	NDUFS1 Antibody detects endogenous levels of total NDUFS1
Immunogen Description	A synthesized peptide derived from human NDUFS1
Other Names	CI-75kD; NDUFS1; PRO1304;
Accession No.	Uniprot:P28331
Uniprot	P28331
Formulation	Rabbit IgG in phosphate buffered saline , pH 7.4, 150mM NaCl, 0.02% sodium azide and 50% glycerol.
Storage	Store at +4°C short term. Store at -20°C long term. Avoid freeze / thaw cycle.

## Application Details

WB 1:1000~1:5000 IHC 1:50~1:200 ICC/IF 1:50~1:200 IP 1:50 FC 1:50

## Images



Western blot analysis of NDUFS1 expression in Raji cell lysate.

## Product Description

Core subunit of the mitochondrial membrane respiratory chain NADH dehydrogenase (Complex I) that is believed to belong to the minimal assembly required for catalysis. Complex I functions in the transfer of electrons from NADH to the respiratory chain.

## Background

---

Core subunit of the mitochondrial membrane respiratory chain NADH dehydrogenase (Complex I) that is believed to belong to the minimal assembly required for catalysis. Complex I functions in the transfer of electrons from NADH to the respiratory chain.

---

Note: This product is for in vitro research use only