

Angiotensinogen Rabbit mAb

Catalog No: #60002

Package Size: #60002-1 50ul #60002-2 100ul

Orders: order@signalwayantibody.com

Support: tech@signalwayantibody.com

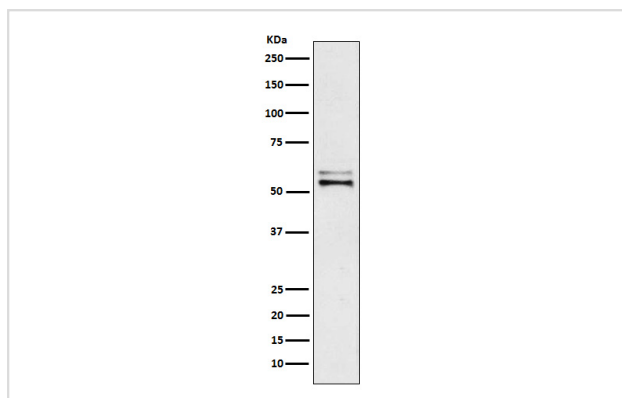
Description

Product Name	Angiotensinogen Rabbit mAb
Host Species	Rabbit
Clonality	Monoclonal
Isotype	Rabbit IgG
Purification	Affinity-chromatography
Applications	WB IP FC
Species Reactivity	Human
Specificity	Angiotensinogen Antibody detects endogenous levels of total Angiotensinogen
Immunogen Description	A synthesized peptide derived from human Angiotensinogen
Other Names	AGT; Angiotensin I; ANHU; Angiotensinogen; Angiotensin II; SERPINA8; Serpin A8;
Accession No.	Uniprot:P01019
Uniprot	P01019
Formulation	Rabbit IgG in phosphate buffered saline , pH 7.4, 150mM NaCl, 0.02% sodium azide and 50% glycerol.
Storage	Store at +4°C short term. Store at -20°C long term. Avoid freeze / thaw cycle.

Application Details

WB 1:1000~1:5000 IP 1:60 FC 1:50

Images



Western blot analysis of Angiotensinogen expression in Human plasma lysate.

Product Description

Essential component of the renin-angiotensin system (RAS), a potent regulator of blood pressure, body fluid and electrolyte homeostasis. In response to lowered blood pressure, the enzyme renin cleaves angiotensinogen to produce angiotensin-1 (angiotensin 1-10).

Background

Essential component of the renin-angiotensin system (RAS), a potent regulator of blood pressure, body fluid and electrolyte homeostasis. In response to lowered blood pressure, the enzyme renin cleaves angiotensinogen to produce angiotensin-1 (angiotensin 1-10).

Note: This product is for in vitro research use only